



# Marywood

U N I V E R S I T Y



FACT BOOK 2010-2011

*Office of Planning and Institutional Research*



## **Mission Statement**

*A Catholic university sponsored by the Congregation of the Sisters, Servants of the Immaculate Heart of Mary, Marywood University roots itself in the principle of justice and a belief that education empowers people. Enacting its ideals, Marywood offers students a welcoming and supportive community that encourages men and women of all backgrounds to shape their lives as leaders in service to others. Proud of its liberal arts tradition and host of professional disciplines, Marywood challenges students to broaden their understanding of global issues and to make decisions based on spiritual, ethical, and religious values. Marywood calls upon students to seek their full potential and invites all to engage in a lifelong process of learning. Witnessing the efficacy of teaching and scholarship, Marywood educates students to live responsibly in a diverse and interdependent world.*

## MEMORANDUM

TO: Marywood University Colleagues

FROM: Dr. Ellen Boylan  
Director of Institutional Research and Assessment

RE: *Fact Book 2010-2011*

DATE: December 2010

The Marywood University *Fact Book 2010-2011*, sixteenth edition, presents concise tables of data counts and trends on students, personnel, finances and facilities. Based on input from many campus departments and units, the *Fact Book* is assembled and published by the Office of Planning and Institutional Research. Sincere thanks to our campus colleagues for their assistance.

Reflected in this *Fact Book* are data on important recent activity:

- Living space provided by additional Woodland residence facilities, opened in fall 2010.
- A second year of operation of the Marywood University School of Architecture.
- Undergraduate enrollment at the highest level in the period shown.
- Initiation of the Strategic Plan 2010-2015 Goals and Objectives.

Footnotes on selected pages clarify recent institutional changes.

The *Fact Book* is publicly available for downloading and printing. For access, go to <http://www.marywood.edu/instresearch/Factbk.pdf>, the Marywood University Planning and Institutional Research web page.

We welcome your comments and suggestions for producing a *Fact Book* with the most timely and useful information possible for the entire campus. The contact person in the Office of Planning and Institutional Research for questions and comments on the *Fact Book 2010-2011* is Ms. Charlotte Woodward, Assistant Director of Institutional Research, who can be reached at [woodward@marywood.edu](mailto:woodward@marywood.edu) or 570-348-6203.

/ld



# TABLE OF CONTENTS

## I STUDENTS

A.	Synopsis of Baccalaureate Degree Programs and Majors .....	1
B.	Synopsis of Graduate Degree Programs .....	3
C.	Degrees Granted by College and Department .....	4
D.	Admissions Activity	
1.	Undergraduate.....	7
♦	<i>Trends in Undergraduate Admissions Activity</i> .....	7
2.	Graduate.....	8
♦	<i>Graduate Admissions Funnel by College</i> .....	8
E.	Average SAT Scores for First-time Full-time Freshmen.....	9
♦	<i>Trends in SAT Scores of First-time Full-time Freshmen</i> .....	9
F.	Fall Headcount and FTE Enrollment by College and Time Status.....	10
G.	Fall Headcount Enrollment by College and Ethnicity .....	14
♦	<i>Trends in Total Undergraduate Enrollment</i> .....	15
♦	<i>Trends in Total Graduate Enrollment</i> .....	15
H.	Fall Headcount Enrollment by College, Department and Level.....	16
I.	Fall Headcount Enrollment by College and Gender .....	18
J.	Fall Undergraduate Enrollment by On/Off-Campus Living.....	20
K.	Students with Disabilities .....	20
L.	Study Abroad Program - Location and Majors of Students.....	20
M.	International Student Enrollment	
1.	By Country .....	21
2.	By Major .....	21
N.	Honors Program	
1.	Majors Represented in Honors Program.....	22
2.	Honors Courses Offered .....	22
O.	Retention and Graduation Rates	
♦	<i>Trends in 6-year Graduation Rates of First-time Full-time Freshmen</i> .....	23
♦	<i>Trends in Freshman Class 1-Year Retention and 6-year Graduation</i> .....	24
P.	Athletics and Recreation .....	25

## II PERSONNEL

A.	Employees by Ethnicity, EEO Category and Time Status.....	26
B.	Full-time Employees by Gender and Ethnicity.....	27
C.	Faculty	
1.	Number of Full-time and Pro-rata Faculty.....	28
2.	Tenure Status Among Full-time Faculty.....	28
3.	Number of Full-time Faculty by Rank and Gender .....	29
4.	Number of Full-time Faculty with Terminal Degrees .....	29

IV	FINANCES	
A.	Unrestricted Operating Revenues .....	30
B.	Percent Distribution of Unrestricted Operating Revenues.....	31
C.	Unrestricted Operating Expenditures.....	32
D.	Percent Distribution of Unrestricted Operating Expenditures .....	32
E.	Externally Sponsored Research as a Percentage of Unrestricted Operating Expenditures .....	33
F.	Endowment, Quasi-Endowment and Other Long-Term Investments.....	33
G.	Tuition, Fees and Room & Board Charges.....	34
H.	Total Cost at Marywood and AICUP Peer Institutions .....	35
	♦ <i>Tuition and Fees: AICUP Comparison Group Average v. Marywood</i> .....	36
I.	Student Financial Aid .....	36
J.	Total Gifts and Grants.....	37
K.	Corporate/Foundation Relations Office Activity .....	37
L.	Alumni Giving .....	37
M.	Office of Research and Community Collaboration .....	37
N.	Comparison of Gift Levels by Campaign Year .....	38
	♦ <i>Total Presidential Society Giving</i> .....	38
V	FACILITIES	
A.	Land and Building Inventory .....	39
B.	University Library.....	40
C.	Office of Information Technology .....	41
VI	ACCREDITATIONS .....	43
VII	STRATEGIC PLAN 2010-2015 GOALS AND OBJECTIVES .....	44

## I. STUDENTS

### Synopsis of Baccalaureate Degree Programs and Majors

(Total 61)

BA Advertising and Public Relations	BA History/Political Science (Pre-law)
BA Art Education	BA History-Social Science/ Secondary Education
BA Art Therapy	BA Musical Theatre
BA Arts Administration (Art)	BA Philosophy
BA Arts Administration (Corporate)	BA Religious Studies
BA Arts Administration (Music)	BA Spanish
BA Arts Administration (Theatre)	BA Spanish/Secondary Education
BA Broadcast Journalism	BA Theatre
BA Communication Arts/Secondary Education (Nonprint Media)	BArch Architecture
BA Communication Arts/Secondary Education (Theatre)	BBA Accounting
BA Comprehensive Social Sciences (General)	BBA Aviation Management (Airport/Airline Management)
BA Comprehensive Social Sciences (Sociology)	BBA Aviation Management (Professional Pilot/Flight Operations)
BA Criminal Justice	BBA Business Information Technology
BA Digital Media and Broadcast Production (Broadcast)	BBA Financial Planning
BA Digital Media and Broadcast Production (Corporate)	BBA Hospitality Management
BA English	BBA International Business
BA English/Secondary Education	BBA Management
BA French	BBA Marketing
BA French/Secondary Education	BBA Retail Business Management
BA Health Services Administration (General)	BEDA Environmental Design - Architecture
BA Health Services Administration (Gerontology)	BFA Design (Graphic Design)
BA History	BFA Design (Interior Architecture/Design)
BA History/Political Science	BFA Design (Photography)
	BFA Studio Art (Ceramics)
	BFA Studio Art (Illustration)
	BFA Studio Art (Painting)
	BFA Studio Art (Sculpture)

## Synopsis of Baccalaureate Degree Programs and Majors

(Continued)

BM	Music Education	BS	Environmental Science
BM	Music Performance	BS	Family and Consumer Science Education
BM	Music Therapy	BS	General Science/Secondary Education
BS	Athletic Training	BS	Health and Physical Education (Education)
BS	Biology	BS	Health and Physical Education (Physical Activity)
BS	Biology (Pre-Chiropractic)	BS	Health Sciences
BS	Biology (Pre-Professional)	BS	Mathematics
BS	Biology/Secondary Education	BS	Mathematics/Secondary Education
BS	Biotechnology	BS	Medical Technology
BS	Communication Sciences and Disorders (Deaf Studies)	BS	Nutrition and Dietetics
BS	Communication Sciences and Disorders (Pre-Professional)	BS	Psychology
BS	Early Childhood Education	BS	Psychology (Clinical Practices)
BS	Elementary Education/English-Science	BS	Psychology (Industrial/Organizational)
BS	Elementary Education/Math-English	BS	Special Education
BS	Elementary Education/Math-Science	BSN	Nursing – Pre-Service
BS	Elementary Education/Math-Social Studies	BSN	Nursing – RN
BS	Elementary Education/Social Studies-Science	BSW	Social Work

**Total Undergraduate Major Programs: 61**



## Synopsis of Graduate Degree Programs

(Total 36 Masters, 1 Educational Specialist, 2 Doctoral)

MA	Art Education	MFA	Visual Arts (Advertising Design)
MA	Art Therapy	MFA	Visual Arts (Clay)
MA	Communication Arts (Interdisciplinary)	MFA	Visual Arts (Graphic Design)
MA	Communication Arts (Media Management)	MFA	Visual Arts (Illustration)
MA	Communication Arts (Production)	MFA	Visual Arts (Metals)
MA	Mental Health Counseling (General)	MFA	Visual Arts (Painting)
MA	Music Education	MFA	Visual Arts (Photography)
MA	Psychology (Clinical Services)	MFA	Visual Arts (Printmaking)
MA	Psychology (General Theoretical)	MHSA	Health Services Administration
MA	Studio Art (Advertising Design)	MMT	Music Therapy
MA	Studio Art (Ceramics)	MPA	Public Administration
MA	Studio Art (Clay)	MS	Biotechnology
MA	Studio Art (Graphic Design)	MS	Clinical Physician Assistant
MA	Studio Art (Illustration)	MS	Counselor Education-Elementary
MA	Studio Art (Interior Architecture)	MS	Counselor Education-Secondary
MA	Studio Art (Painting)	MS	Criminal Justice
MA	Studio Art (Photography)	MS	Early Childhood Intervention
MA	Studio Art (Printmaking)	MS	Gerontology
MA	Studio Art (Sculpture)	MS	Higher Education Administration
MA	Studio Art (Weaving)	MS	Information Sciences (Library Science/Information Specialist)
MArch	Architecture	MS	Management Information Systems
MAT	Elementary Education	MS	Nursing Administration
MAT	Secondary/K-12 Education	MS	Nutrition
MBA	Business Administration (Finance and Investments)	MS	Physician Assistant Studies
MBA	Business Administration (General Management)	MS	Reading Education
MBA	Business Administration (Management Information Systems)	MS	School Leadership
MEd	Instructional Leadership	MS	Special Education
		MS	Special Education Administration and Supervision
		MS	Speech-Language Pathology

## Synopsis of Graduate Degree Programs

(Continued)

MS	Sports Nutrition and Exercise Science	PhD	Human Development (Higher Education Administration)
MSW	Social Work		
EdS	School Psychology	PhD	Human Development (Instructional Leadership)
PhD	Human Development (Educational Administration)	PhD	Human Development (Social Work)
PhD	Human Development (Health Promotion)	PsyD	Clinical Psychology

**Total Masters Degree Programs: 36**  
**Educational Specialist Degrees: 1**  
**Total Doctoral Degrees: 2, with 5 PhD tracks**

## Degrees Granted by College and Department July 1, 2005 to June 30, 2010

### Insalaco College of Creative and Performing Arts

		<u>2005-06</u>	<u>2006-07</u>	<u>2007-08</u>	<u>2008-09</u>	<u>2009-10</u>
<b>Art</b>						
	B.A.	18	19	20	20	22
	B.F.A.	50	54	34	62	39
	M.A.	5	15	22	19	11
	M.F.A.	22	11	20	16	16
<b>Communication Arts</b>						
	B.A.	23	24	20	13	22
	M.A.	18	8	14	11	8
	M.S.	6	8	12	3	8
<b>Music &amp; Theatre</b>						
	B.A.	2	1	3	4	7
	B.M.	13	11	16	9	9
	M.A.	1	5	1	3	4
<b>Ad Hoc</b>						
	B.A.	0	1	0	0	0
	M.A.	0	0	0	7	0
<b>Total Bachelors</b>		<b>106</b>	<b>110</b>	<b>93</b>	<b>108</b>	<b>99</b>
<b>Total Masters</b>		<b>52</b>	<b>47</b>	<b>69</b>	<b>59</b>	<b>47</b>

**Degrees Granted by College and Department**  
**July 1, 2005 to June 30, 2010**  
 (continued)

**Reap College of Education and Human Development**

**Communication Science and Disorders**

B.S.	18	14	7	14	16
MS	19	12	23	18	21

**Counseling/Psychology**

B.S.	28	26	24	28	27
M.A.	23	29	27	32	37
M.S.	8	15	12	7	18
Ed.S.	0	6	7	9	4
Psy.D.	0	1	6	7	11

**Education**

B.S.	24	26	31	20	32
M.A.T.	13	17	11	12	28
M.Ed.	2	0	1	2	3
M.S.	23	14	14	22	12

**Human Development**

Ph.D.	18	16	8	10	10
-------	----	----	---	----	----

**Special Education**

B.S.	20	5	8	13	6
M.S.	29	19	11	9	10

**Total Bachelors**

**90      71      70      75      81**

**Total Masters**

**117      106      99      102      129**

**Total Educational Specialist**

**0      6      7      9      4**

**Total Doctoral**

**18      17      14      17      21**

**College of Health and Human Services**

	<u>2005-06</u>	<u>2006-07</u>	<u>2007-08</u>	<u>2008-09</u>	<u>2009-10</u>
<b>Health and Physical Education</b>					
B.S.	17	18	17	15	16
M.S.	0	0	0	4	4
<b>Nursing/Public Administration</b>					
B.A.	1	1	0	2	3
B.S.	1	0	0	0	0
B.S.N.	19	25	33	27	23
M.H.S.A.	10	4	5	6	4
M.P.A.	9	8	6	9	6
M.S.	1	3	3	7	8
<b>Nutrition and Dietetics</b>					
B.S.	16	20	21	23	22
M.S.	6	9	3	14	10
<b>Physician Assistant</b>					
B.S.	5	9	8	10	15
M.S.	15	29	29	27	28
<b>Social Work</b>					
B.S.W.	11	10	13	6	10
M.S.W.	93	104	118	125	117
<b>Total Bachelors</b>	<b>70</b>	<b>83</b>	<b>92</b>	<b>83</b>	<b>89</b>
<b>Total Masters</b>	<b>134</b>	<b>157</b>	<b>164</b>	<b>192</b>	<b>177</b>

**Degrees Granted by College and Department**  
**July 1, 2005 to June 30, 2010**  
(Continued)

**College of Liberal Arts and Sciences**

**Business and Managerial Science**

B.A.	0	0	0	0	1
B.B.A.	39	33	40	53	54
B.S.	0	0	1	0	0
M.B.A.	12	11	15	18	13
M.S.	1	0	0	0	0

**English**

B.A.	17	27	20	23	19
------	----	----	----	----	----

**Foreign Languages**

B.A.	2	4	5	5	2
------	---	---	---	---	---

**Mathematics**

B.S.	5	1	1	4	4
------	---	---	---	---	---

**Religious Studies**

B.A.	2	0	1	2	0
------	---	---	---	---	---

**Science**

B (Pre PA)	0	0	0	1	0
B.S.	12	23	10	21	29
M.S.	0	0	7	6	11

**Social Sciences**

B.A.	31	24	22	25	25
M.S.	4	3	10	3	11

<b>Total Bachelors</b>	<b>108</b>	<b>112</b>	<b>100</b>	<b>134</b>	<b>135</b>
<b>Total Masters</b>	<b>16</b>	<b>14</b>	<b>32</b>	<b>27</b>	<b>33</b>

**Off Campus Degree Program**

	<u>2005-06</u>	<u>2006-07</u>	<u>2007-08</u>	<u>2008-09</u>	<u>2009-10</u>
B.S.	4	0	0	0	0

**University Overall**

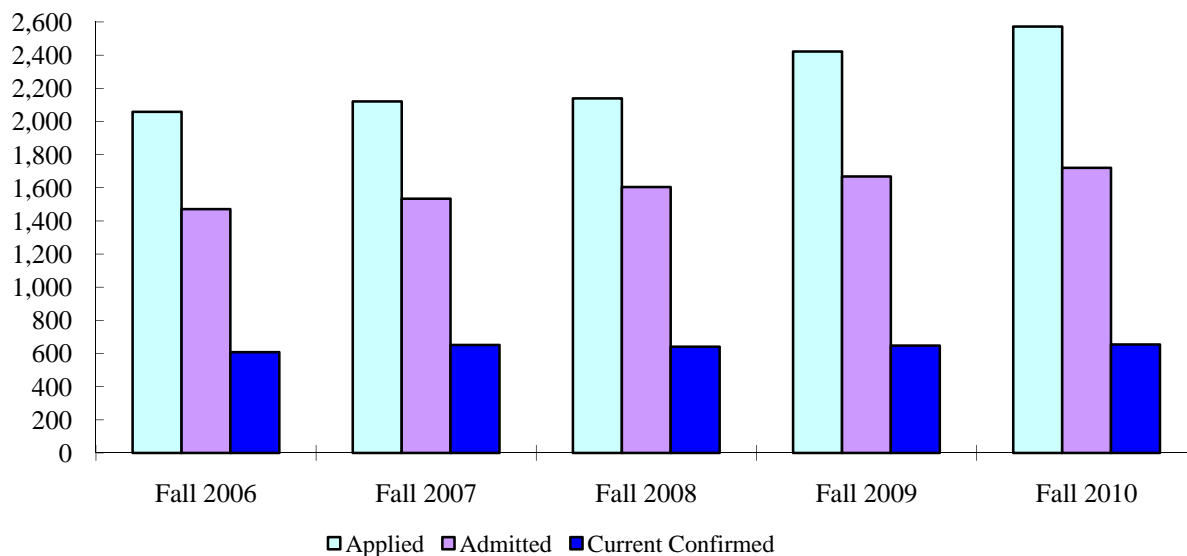
	<u>2005-06</u>	<u>2006-07</u>	<u>2007-08</u>	<u>2008-09</u>	<u>2009-10</u>
<b>Total Bachelors Awarded</b>	<b>378</b>	<b>376</b>	<b>355</b>	<b>400</b>	<b>418</b>
<b>Total Masters Awarded</b>	<b>320</b>	<b>324</b>	<b>364</b>	<b>380</b>	<b>388</b>
<b>Total Educational Specialist Awarded</b>	<b>0</b>	<b>6</b>	<b>7</b>	<b>9</b>	<b>4</b>
<b>Total Doctoral Awarded</b>	<b>18</b>	<b>17</b>	<b>14</b>	<b>17</b>	<b>21</b>
<b>Total All Degrees Awarded</b>	<b>716</b>	<b>723</b>	<b>740</b>	<b>806</b>	<b>831</b>

## Admissions Activity

### Undergraduate Fall Full- and Part-time New Students

	2006	2007	2008	2009	2010	2006-10 % change
Applied	<b>2,058</b>	<b>2,121</b>	<b>2,139</b>	<b>2,422</b>	<b>2,572</b>	<b>25.0</b>
Freshman	1,707	1,756	1,774	1,923	2,062	20.8
Transfer	342	356	356	481	492	43.9
Other	9	9	9	18	18	100.0
Offered Admission	<b>1,471</b>	<b>1,534</b>	<b>1,604</b>	<b>1,668</b>	<b>1,720</b>	<b>16.9</b>
Freshman	1,257	1,289	1,377	1,392	1,455	15.8
Transfer	209	241	222	261	257	23.0
Other	5	4	5	15	8	60.0
Offer Rate	<b>71.2%</b>	<b>72.3%</b>	<b>75.0%</b>	<b>68.9%</b>	<b>66.9%</b>	
Freshman	73.6%	73.4%	77.6%	72.3%	70.6%	
Transfer	61.1%	67.7%	62.4%	54.3%	52.2%	
Other	55.6%	44.4%	55.6%	83.3%	44.4%	
Current Confirmed	<b>608</b>	<b>651</b>	<b>641</b>	<b>648</b>	<b>654</b>	<b>7.6</b>
Freshman	462	478	487	473	507	9.7
Transfer	142	169	150	162	144	1.4
Other	4	4	4	13	3	-25.0
Yield Rate	<b>41.3%</b>	<b>42.4%</b>	<b>40.0%</b>	<b>38.8%</b>	<b>38.0%</b>	
Freshman	36.8%	37.1%	35.4%	34.0%	34.8%	
Transfer	67.9%	70.1%	67.6%	62.1%	56.0%	
Other	80.0%	100.0%	80.0%	86.7%	37.5%	

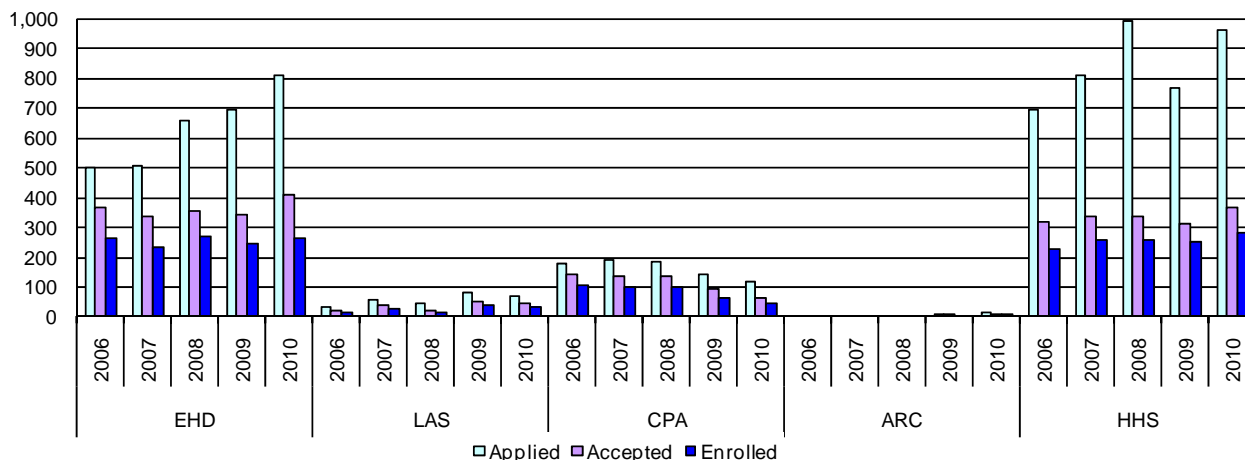
### Trends in Undergraduate Admissions Activity Fall 2006 to Fall 2010



**Admissions Activity** (continued)  
**Graduate**  
**Full- and Part-time New Students (by calendar year)**

	2006	2007	2008	2009	2010	
<b>CPA<sup>1</sup></b>						
Applied	180	188	183	140	117	
Accepted	145	137	135	91	65	
Enrolled	103	100	99	65	45	
<b>EHD</b>						
Applied	499	506	660	693	809	
Accepted	366	337	357	343	409	
Enrolled	264	231	269	245	264	
<b>HHS</b>						
Applied	694	811	993	767	964	
Accepted	316	334	338	310	366	
Enrolled	225	259	257	250	280	
<b>LAS<sup>2</sup></b>						
Applied	32	57	47	82	71	
Accepted	19	42	19	53	48	
Enrolled	14	28	14	40	35	
<b>ARC<sup>3</sup></b>						
Applied				4	13	
Accepted				2	9	
Enrolled				0	9	
<b>TOTAL</b>						<b>2006-10 % change</b>
Applied	1,405	1,562	1,883	1,686	1,974	40.5
Accepted	804	850	849	799	897	11.6
Enrolled	606	618	639	600	633	4.5

**Graduate Admissions Funnel by College**  
**2006 - 2010**



<sup>1</sup> As of July 1, 2009, the Business Department was moved from CAM to LAS and CAM was renamed CPA. The School of Architecture (ARC) was opened and the BFA Design (Interior Design) and MA Studio Art (Interior Architecture) programs were moved from the Art Department in CAM to ARC.

<sup>2</sup> As of July 1, 2009, the Business Department was moved from CAM to LAS.

<sup>3</sup> As of July 1, 2009, the School of Architecture (ARC) was opened and the BFA Design (Interior Design) and MA Studio Art (Interior Architecture) programs were moved from the Art Department in CAM to ARC.

### Average SAT Scores for First-time Full-time Freshmen

	Critical Reading*	Math	Reading + Math	Writing
Fall '04	524	503	1026	
Fall '05	527	521	1049	
Fall '06	513	514	1027	
Fall '07	521	517	1038	512
Fall '08	522	518	1039	510
Fall '09	528	522	1050	520
Fall '10	525	525	1050	518

\* Prior to Fall 2007, old SAT Verbal score

### Trends in SAT Scores<sup>4</sup> of First-time Full-time Freshmen

<sup>4</sup> As of Fall 2007, SAT Verbal became SAT Critical Reading and SAT Writing scores were added.

## Fall Headcount and FTE\* Enrollment by College and Time Status

### Insalaco College of Creative and Performing Arts<sup>5</sup>

	2006	2007	2008	2009	2010
Undergraduate					
FT	408	406	430	430	438
PT	<u>18</u>	<u>21</u>	<u>25</u>	<u>16</u>	<u>25</u>
Total	<b>426</b>	<b>427</b>	<b>455</b>	<b>446</b>	<b>463</b>
FTE – Internal	416.3	413.9	440.0	435.9	447.8
FTE – IPEDS	414.0	413.0	438.3	435.3	446.3
Graduate					
FT	50	58	61	62	68
PT	<u>104</u>	<u>101</u>	<u>97</u>	<u>96</u>	<u>71</u>
Total	<b>154</b>	<b>159</b>	<b>168</b>	<b>158</b>	<b>139</b>
FTE – Internal	88.8	95.1	98.2	98.5	95.6
FTE – IPEDS	84.7	91.7	93.3	94.0	91.7
Total					
FT	458	464	491	492	506
PT	<u>122</u>	<u>122</u>	<u>122</u>	<u>112</u>	<u>96</u>
Total	<b>580</b>	<b>586</b>	<b>613</b>	<b>604</b>	<b>602</b>
FTE – Internal	505.1	509.0	538.2	534.4	543.4
FTE – IPEDS	498.7	504.7	531.7	529.3	538.0

### Reap College of Education and Human Development

	2006	2007	2008	2009	2010
Undergraduate					
FT	333	360	370	381	382
PT	<u>24</u>	<u>14</u>	<u>5</u>	<u>7</u>	<u>9</u>
Total	<b>357</b>	<b>374</b>	<b>375</b>	<b>388</b>	<b>391</b>
FTE – Internal	342.5	365.7	372.0	383.5	385.3
FTE – IPEDS	341.0	364.7	371.7	383.3	385.0
Graduate					
FT	183	180	199	172	196
PT	<u>377</u>	<u>346</u>	<u>342</u>	<u>370</u>	<u>283</u>
Total	<b>560</b>	<b>526</b>	<b>541</b>	<b>542</b>	<b>479</b>
FTE – Internal	321.9	303.1	321.6	306.2	300.8
FTE – IPEDS	308.7	295.3	313.0	295.3	290.3
Total					
FT	516	540	569	553	578
PT	<u>401</u>	<u>360</u>	<u>347</u>	<u>377</u>	<u>292</u>
Total	<b>917</b>	<b>900</b>	<b>916</b>	<b>930</b>	<b>870</b>
FTE – Internal	664.5	668.8	693.6	689.7	686.1
FTE – IPEDS	649.7	660.0	684.7	678.7	675.3

\* FTE Internal = FT headcount + (PT credits/15 for undergraduate or PT credits/12 for graduate)

FTE IPEDS = FT headcount + PT headcount/3

<sup>5</sup> As of July 1, 2009, the Business Department was moved from CAM to LAS and CAM was renamed CPA. The School of Architecture (ARC) was opened and the BFA Design (Interior Design) and MA Studio Art (Interior Architecture) programs were moved from the Art Department in CAM to ARC.



## Fall Headcount and FTE\* Enrollment by College and Time Status

(continued)

### College of Health and Human Services

	2006	2007	2008	2009	2010
Undergraduate					
FT	332	350	357	361	402
PT	<u>25</u>	<u>17</u>	<u>17</u>	<u>21</u>	<u>17</u>
Total	<b>357</b>	<b>367</b>	<b>374</b>	<b>382</b>	<b>419</b>
FTE – Internal	343.2	357.6	364.5	369.8	411.5
FTE – IPEDS	340.3	355.7	362.7	368.0	407.7
Graduate					
FT	270	276	277	278	316
PT	<u>222</u>	<u>245</u>	<u>246</u>	<u>224</u>	<u>190</u>
Total	<b>492</b>	<b>521</b>	<b>523</b>	<b>502</b>	<b>506</b>
FTE – Internal	367.8	383.3	385.2	379.3	397.8
FTE – IPEDS	344.0	357.7	359.0	352.7	379.3
Total					
FT	602	626	634	639	718
PT	<u>247</u>	<u>262</u>	<u>263</u>	<u>245</u>	<u>207</u>
Total	<b>849</b>	<b>888</b>	<b>897</b>	<b>884</b>	<b>925</b>
FTE – Internal	711.0	740.9	749.7	749.1	809.3
FTE – IPEDS	684.3	713.3	721.7	720.7	787.0

### College of Liberal Arts and Sciences<sup>6</sup>

	2006	2007	2008	2009	2010
Undergraduate					
FT	607	670	714	766	731
PT	<u>51</u>	<u>62</u>	<u>58</u>	<u>52</u>	<u>55</u>
Total	<b>658</b>	<b>732</b>	<b>772</b>	<b>818</b>	<b>786</b>
FTE – Internal	626.1	696.1	736.6	785.3	751.4
FTE – IPEDS	624.0	690.7	733.3	783.3	749.3
Graduate					
FT	12	22	19	26	30
PT	<u>59</u>	<u>74</u>	<u>56</u>	<u>57</u>	<u>51</u>
Total	<b>71</b>	<b>96</b>	<b>75</b>	<b>83</b>	<b>81</b>
FTE – Internal	34.3	51.8	40.3	47.7	50.3
FTE – IPEDS	31.7	46.7	22.2	45.0	47.0
Total					
FT	619	692	733	792	761
PT	<u>110</u>	<u>136</u>	<u>114</u>	<u>109</u>	<u>106</u>
Total	<b>729</b>	<b>828</b>	<b>847</b>	<b>901</b>	<b>867</b>
FTE	660.3	747.9	776.9	833.0	801.7
FTE – IPEDS	655.7	737.3	771.0	828.3	796.3

\* FTE Internal = FT headcount + (PT credits/15 for undergraduate or PT credits/12 for graduate)

FTE IPEDS = FT headcount + PT headcount/3

<sup>6</sup> As of July 1, 2009, the Business Department was moved from CAM to LAS and CAM was renamed CPA.

# Fall Headcount and FTE\* Enrollment by College and Time Status

(continued)

## School of Architecture<sup>7</sup>

	2006	2007	2008	2009	2010
Undergraduate					
FT	52	49	60	112	146
PT	<u>4</u>	<u>1</u>	<u>3</u>	<u>4</u>	<u>1</u>
Total	<b>56</b>	<b>50</b>	<b>63</b>	<b>116</b>	<b>147</b>
FTE – Internal	53.7	49.4		113.0	146.6
FTE – IPEDS	53.3	49.3	61.0	113.3	146.3
Graduate					
FT	1	1	1	0	6
PT	<u>6</u>	<u>11</u>	<u>9</u>	<u>2</u>	<u>1</u>
Total	<b>7</b>	<b>12</b>	<b>10</b>	<b>2</b>	<b>7</b>
FTE – Internal	3.8	6.5		1.0	6.5
FTE – IPEDS	3.0	4.7	4.0	0.67	6.3
Total					
FT	53	50	61	112	152
PT	<u>10</u>	<u>12</u>	<u>12</u>	<u>6</u>	<u>2</u>
Total	<b>63</b>	<b>62</b>	<b>73</b>	<b>118</b>	<b>154</b>
FTE – Internal	57.5	55.9	66.7	114.0	153.1
FTE – IPEDS	56.3	54.0	65.0	114.0	152.7

## Registrar<sup>8</sup>

	2006	2007	2008	2009	2010
Undergraduate					
FT	2	3	0	3	7
PT	<u>40</u>	<u>49</u>	<u>32</u>	<u>31</u>	<u>54</u>
Total	<b>42</b>	<b>52</b>	<b>32</b>	<b>34</b>	<b>61</b>
FTE – Internal	7.2	11.3	4.33	9.1	17.9
FTE – IPEDS	15.3	19.3	10.7	13.3	25.0

\* FTE Internal = FT headcount + (PT credits/15 for undergraduate or PT credits/12 for graduate)

FTE IPEDS = FT headcount + PT headcount/3

<sup>7</sup> As of July 1, 2009, the School of Architecture (ARC) was opened and the BFA Design (Interior Design) and MA Studio Art (Interior Architecture) programs were moved from the Art Department in CAM to ARC.

<sup>8</sup> In Fall 2007, OCPD and SCE were combined under the Registrar.

## Fall Headcount and FTE\* Enrollment by College and Time Status

(continued)

### Total University

	<u>2006</u>	<u>2007</u>	<u>2008</u>	<u>2009</u>	<u>2010</u>
Undergraduate					
FT	1,734	1,838	1,933	2,053	2,106
PT	<u>162</u>	<u>164</u>	<u>138</u>	<u>131</u>	<u>161</u>
<b>Total</b>	<b>1,896</b>	<b>2,002</b>	<b>2,071</b>	<b>2,184</b>	<b>2,267</b>
FTE – Internal	1,789.0	1,894.0	1,978.9	2,096.6	2,160.6
FTE – IPEDS	1,788.0	1,892.7	1,977.7	2,096.7	2,159.7
Graduate					
FT	516	537	557	538	616
PT	<u>768</u>	<u>777</u>	<u>750</u>	<u>749</u>	<u>596</u>
<b>Total</b>	<b>1,284</b>	<b>1,314</b>	<b>1,307</b>	<b>1,287</b>	<b>1,212</b>
FTE – Internal	816.5	839.7	850.5	832.7	850.1
FTE – IPEDS	772.0	796.0	807.0	787.7	814.7
Total					
FT	2,250	2,375	2,488	2,591	2,722
PT	<u>930</u>	<u>941</u>	<u>890</u>	<u>880</u>	<u>757</u>
<b>Total</b>	<b>3,180</b>	<b>3,316</b>	<b>3,378</b>	<b>3,471</b>	<b>3,479</b>
FTE – Internal	2,605.5	2,733.7	2,829.4	2,929.3	3,011.5
FTE – IPEDS	2,560.0	2,688.7	2,784.7	2,884.3	2,974.3

\* FTE Internal = FT headcount + (PT credits/15 for undergraduate or PT credits/12 for graduate)

FTE IPEDS = FT headcount + (PT headcount/3)

## Fall Headcount Enrollment by College and Ethnicity/Race

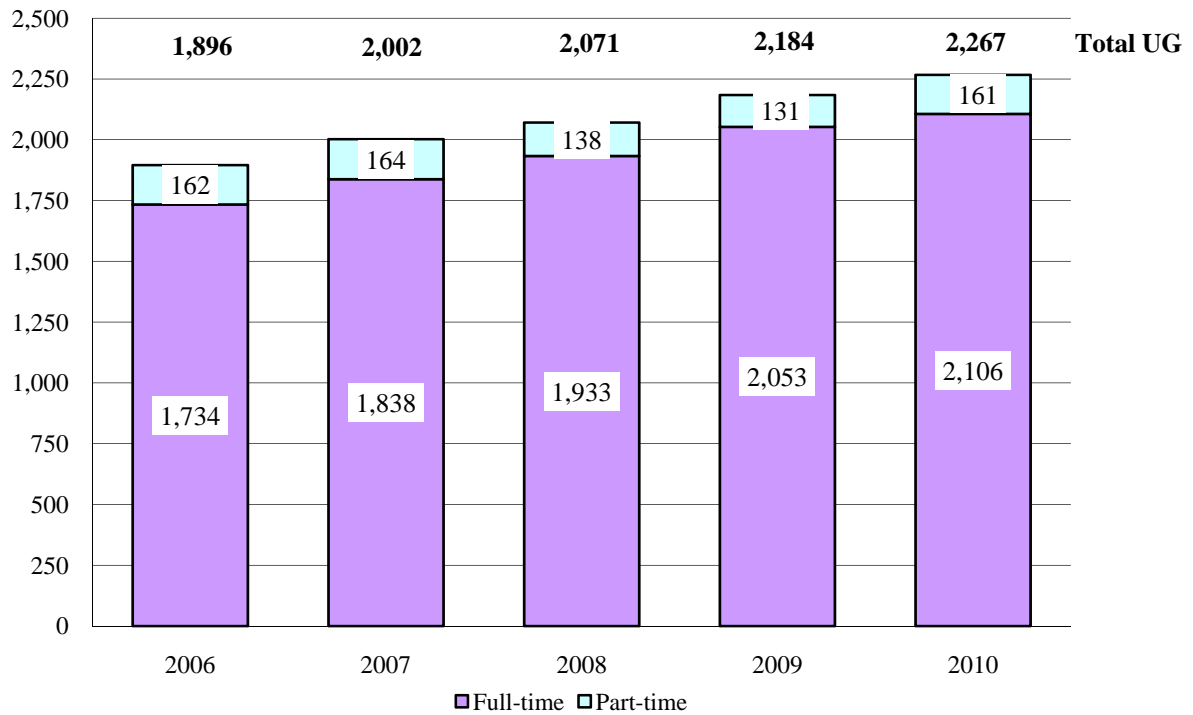
	2006	2007	2008	2009	2010
<b>Insalaco College of Creative and Performing Arts<sup>9</sup></b>					
Hispanic	18	21	15	18	20
White	474	485	512	501	510
Other/Unknown	81	72	77	82	69
Non-resident Alien	7	8	9	3	3
<b>Reap College of Education and Human Development</b>					
Hispanic	12	11	14	16	18
White	806	779	786	809	768
Other/Unknown	92	102	109	101	77
Non-resident Alien	7	8	7	4	7
<b>College of Health and Human Services</b>					
Hispanic	20	26	23	31	27
White	698	732	747	720	753
Other/Unknown	122	120	118	120	134
Non-resident Alien	9	10	9	13	11
<b>College of Liberal Arts and Sciences<sup>10</sup></b>					
Hispanic	19	22	29	28	34
White	585	660	681	750	743
Other/Unknown	109	133	124	110	77
Non-resident Alien	16	13	13	13	13
<b>School of Architecture</b>					
Hispanic	2	3	3	5	5
White	55	52	61	99	131
Other/Unknown	5	6	8	14	18
Non-resident Alien	1	1	1	0	0
<b>Registrar<sup>11</sup></b>					
Hispanic	2	0	0	0	1
White	4	7	10	6	24
Other/Unknown	23	32	11	22	20
Non-resident Alien	13	13	11	6	16
<b>TOTAL UNDERGRADUATE</b>					
Hispanic	52	57	56	60	71
White	1,550	1,635	1,725	1,857	1,950
Other/Unknown	258	277	257	244	215
Non-resident Alien	36	33	33	23	31
<b>TOTAL GRADUATE</b>					
Hispanic	21	26	28	38	34
White	1,072	1,080	1,072	1,028	979
Other/Unknown	174	188	190	205	180
Non-resident Alien	17	20	17	16	19
<b>TOTAL UNIVERSITY</b>					
Hispanic	73	83	84	98	105
White	2,622	2,715	2,797	2,885	2,929
Other/Unknown	432	465	447	449	395
Non-resident Alien	53	53	50	39	50

<sup>9</sup> As of July 1, 2009, the Business Department was moved from CAM to LAS and CAM was renamed to CPA. The School of Architecture (ARC) was opened and the BFA Design (Interior Design) and MA Studio Art (Interior Architecture) programs were moved from the Art Department in CAM to ARC.

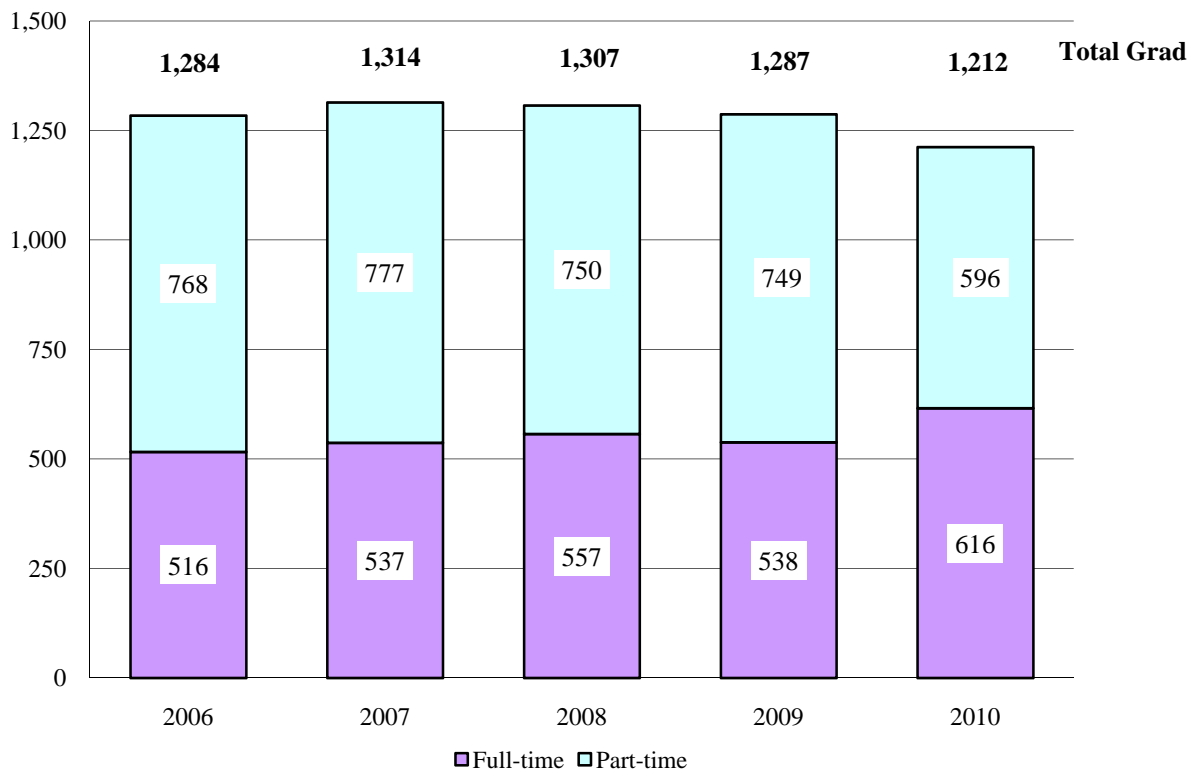
<sup>10</sup> As of July 1, 2009, the Business Department was moved from CAM to LAS.

<sup>11</sup> In Fall 2007, OCDP and SCE were combined under the Registrar.

### Trends in Total Undergraduate Enrollment Fall 2006 to Fall 2010



### Trends in Total Graduate Enrollment Fall 2006 to Fall 2010



**Headcount Enrollment by College, Department and Level – Fall 2006 to Fall 2010**

		2006	2007	2008	2009	2010
<b>Insalaco College of Creative Arts and Management<sup>12</sup></b>						
Art <sup>13</sup>	Undergraduate	263	279	301	286	296
	Graduate	83	77	87	95	91
Communication Arts <sup>14</sup>	Undergraduate	69	60	68	70	73
	Graduate	49	52	46	42	34
Music, Theatre & Dance <sup>15</sup>	Undergraduate	92	85	86	90	91
	Graduate	12	12	14	11	8
Dean/Academic Advising <sup>16</sup>	Undergraduate	2	3	0	0	3
	Graduate	10	18	11	10	6
<b>Reap College of Education and Human Development</b>						
Communication Disorders	Undergraduate	59	61	73	77	85
	Graduate	36	35	40	30	20
Counseling/Psychology	Undergraduate	111	115	118	117	121
	Graduate	176	170	168	168	163
Education	Undergraduate	112	127	123	139	142
	Graduate	172	162	187	177	155
Human Development	Graduate	90	90	93	99	87
Special Education	Undergraduate	25	30	23	13	7
	Graduate	52	33	33	35	40
Dean/Academic Advising	Undergraduate	50	41	38	42	36
	Graduate	34	36	20	33	14

<sup>12</sup> As of July 1, 2009, the Business Department was moved from CAM to LAS and CAM was renamed CPA. The School of Architecture (ARC) was opened and the BFA Design (Interior Design) and MA Studio Art (Interior Architecture) programs were moved from the Art Department in CAM to ARC.

<sup>13</sup> As of July 1, 2009, the School of Architecture (ARC) was opened and the BFA Design (Interior Design) and MA Studio Art (Interior Architecture) programs were moved from the Art Department in CAM to ARC.

<sup>14</sup> As of July 1, 2009 the BA Theatre program was moved from the Communication Arts Department to the Music Department and the BA Musical Theatre program was moved from the Dean to the Department of Music, Theatre & Dance.

<sup>15</sup> As of July 1, 2009, the BA Theatre program was moved from the Communication Arts Department to the Music, Theatre & Dance Department and the BA Musical Theatre program was moved from the Dean of CAM to the Department of Music, Theatre & Dance.

<sup>16</sup> As of July 1, 2009, the BA Musical Theatre program was moved from the Dean of CAM to the Department of Music, Theatre & Dance.

**Headcount by College, Department and Level – Fall 2006 to Fall 2010**

(continued)

		2006	2007	2008	2009	2010
<b>College of Health and Human Services</b>						
Health & Physical Education	Undergraduate	87	93	99	105	112
	Graduate	0	0	8	5	4
Nursing/Public Admin	Undergraduate	123	121	122	112	121
	Graduate	47	49	52	51	55
Nutrition and Dietetics	Undergraduate	91	96	115	112	125
	Graduate	58	68	68	49	60
Physician Assistant	Undergraduate	0	8	0	0	0
	Graduate	41	44	43	45	51
Social Work	Undergraduate	47	43	36	44	49
	Graduate	307	329	328	327	320
Dean/Academic Advising	Undergraduate	9	6	2	9	12
	Graduate	39	31	24	25	16
<b>College of Liberal Arts and Sciences<sup>17</sup></b>						
Business	Undergraduate	180	225	236	247	252
	Graduate	51	58	43	45	45
English	Undergraduate	72	78	85	68	57
Foreign Languages	Undergraduate	19	20	14	9	12
Mathematics	Undergraduate	26	25	31	26	25
Philosophy	Undergraduate	0	0	2	1	6
Religious Studies	Undergraduate	3	4	4	3	3
Science	Undergraduate	124	155	174	214	214
	Graduate	4	14	8	8	11
Social Science	Undergraduate	122	120	130	137	137
	Graduate	13	20	18	28	21
Dean/Academic Advising	Undergraduate	112	105	96	113	80
	Graduate	3	4	6	2	4
<b>School of Architecture<sup>18</sup></b>						
	Undergraduate	56	50	63	116	147
	Graduate	7	12	10	2	7
<b>Registrar<sup>19</sup></b>						
	IEP	13	14	11	6	16
	Undergraduate	29	38	21	28	45

<sup>17</sup> As of July 1, 2009, the Business Department was moved from CAM to LAS.<sup>18</sup> As of July 1, 2009, the School of Architecture (ARC) was opened and the BRA Design (Interior Design) and the MA Studio Art (Interior Architecture) programs were moved from the Art Department in CAM to ARC.<sup>19</sup> In Fall 2007, OCPD and SCE were combined under the Registrar.

## Headcount Enrollment by College and Gender

	2006	2007	2008	2009	2010	
					N	%
<b>Insalaco College of Creative and Performing Arts<sup>20</sup></b>						
Undergraduate						
Women	303	302	327	321	340	73.4
Men	<u>123</u>	<u>125</u>	<u>128</u>	<u>125</u>	<u>123</u>	26.6
<b>Total</b>	<b>426</b>	<b>427</b>	<b>455</b>	<b>446</b>	<b>463</b>	
Graduate						
Women	101	118	112	112	102	73.4
Men	<u>53</u>	<u>41</u>	<u>46</u>	<u>46</u>	<u>37</u>	26.6
<b>Total</b>	<b>154</b>	<b>159</b>	<b>158</b>	<b>158</b>	<b>139</b>	
<b>Reap College of Education and Human Development</b>						
Undergraduate						
Women	303	324	321	345	354	90.5
Men	<u>54</u>	<u>50</u>	<u>54</u>	<u>43</u>	<u>37</u>	9.5
<b>Total</b>	<b>357</b>	<b>374</b>	<b>375</b>	<b>388</b>	<b>391</b>	
Graduate						
Women	447	426	429	446	386	80.6
Men	<u>113</u>	<u>100</u>	<u>112</u>	<u>96</u>	<u>93</u>	19.4
<b>Total</b>	<b>560</b>	<b>526</b>	<b>541</b>	<b>542</b>	<b>479</b>	
<b>College of Health and Human Services</b>						
Undergraduate						
Women	289	291	286	294	323	77.1
Men	<u>68</u>	<u>76</u>	<u>88</u>	<u>88</u>	<u>96</u>	22.9
<b>Total</b>	<b>357</b>	<b>367</b>	<b>374</b>	<b>382</b>	<b>419</b>	
Graduate						
Women	408	439	435	422	419	82.8
Men	<u>84</u>	<u>82</u>	<u>88</u>	<u>80</u>	<u>87</u>	17.2
<b>Total</b>	<b>492</b>	<b>521</b>	<b>523</b>	<b>502</b>	<b>506</b>	
<b>College of Liberal Arts and Sciences<sup>21</sup></b>						
Undergraduate						
Women	392	420	435	460	437	55.6
Men	<u>266</u>	<u>312</u>	<u>337</u>	<u>358</u>	<u>349</u>	44.4
<b>Total</b>	<b>658</b>	<b>732</b>	<b>772</b>	<b>818</b>	<b>786</b>	
Graduate						
Women	46	63	37	41	46	56.8
Men	<u>25</u>	<u>33</u>	<u>38</u>	<u>42</u>	<u>35</u>	43.2
<b>Total</b>	<b>71</b>	<b>96</b>	<b>75</b>	<b>83</b>	<b>81</b>	

(continued)

<sup>20</sup> As of July 1, 2009, the Business Department was moved from CAM to LAS and CAM was renamed CPA. The School of Architecture (ARC) was opened and the BFA Design (Interior Design) and MA Studio Art (Interior Architecture) programs were moved from the Art Department in CAM to ARC.

<sup>21</sup> As of July 1, 2009, the Business Department was moved from CAM to LAS.



**Headcount Enrollment by College and Gender**

(continued)

	2006	2007	2008	2009	2010	
					N	%
<b>School of Architecture<sup>22</sup></b>						
Undergraduate						
Women	53	49	58	76	85	57.8
Men	<u>3</u>	<u>1</u>	<u>5</u>	<u>40</u>	<u>62</u>	42.2
<b>Total</b>	<b>56</b>	<b>50</b>	<b>63</b>	<b>116</b>	<b>147</b>	
Graduate						
Women	4	9	9	2	7	
Men	<u>3</u>	<u>3</u>	<u>1</u>	<u>0</u>	<u>0</u>	
<b>Total</b>	<b>7</b>	<b>12</b>	<b>10</b>	<b>2</b>	<b>7</b>	
<b>Registrar<sup>23</sup></b>						
Undergraduate						
Women	27	38	22	23	42	68.9
Men	<u>15</u>	<u>14</u>	<u>10</u>	<u>11</u>	<u>19</u>	31.1
<b>Total</b>	<b>42</b>	<b>52</b>	<b>32</b>	<b>34</b>	<b>61</b>	
<b>Total University</b>						
Undergraduate						
Women	1,367	1,424	1,449	1,519	1,581	69.7
Men	<u>529</u>	<u>578</u>	<u>622</u>	<u>665</u>	<u>686</u>	30.3
<b>Total</b>	<b>1,896</b>	<b>2,002</b>	<b>2,071</b>	<b>2,184</b>	<b>2,267</b>	
Graduate						
Women	1,006	1,055	1,022	1,023	960	79.2
Men	<u>278</u>	<u>259</u>	<u>285</u>	<u>264</u>	<u>252</u>	20.8
<b>Total</b>	<b>1,284</b>	<b>1,314</b>	<b>1,307</b>	<b>1,287</b>	<b>1,212</b>	

<sup>22</sup> As of July 1, 2009, the School of Architecture (ARC) was opened and the BFA Design (Interior Design) and MA Studio Art (Interior Architecture) programs were moved from the Art Department in CAM to ARC.

<sup>23</sup> In Fall 2007, OCDP and SCE were combined under the Registrar.

## Fall Full-time Undergraduate Enrollment by On/Off-Campus Living

		Fall 2006	Fall 2007	Fall 2008	Fall 2009	Fall 2010
<b>On-Campus</b>						
Freshmen		346	380	423	386	388
Total	Women	580	659	694	703	764
	Men	<u>179</u>	<u>214</u>	<u>246</u>	<u>259</u>	<u>249</u>
	<b>Total</b>	<b>759</b>	<b>873</b>	<b>940</b>	<b>962</b>	<b>1,013</b>
Percent of Total Full-time		43%	47%	49%	47%	48%
<b>Off-Campus</b>						
Full-time	Women	682	657	666	731	708
	Men	<u>300</u>	<u>309</u>	<u>327</u>	<u>356</u>	<u>378</u>
	<b>Total</b>	<b>982</b>	<b>956</b>	<b>993</b>	<b>1,087</b>	<b>1,086</b>
Part-time	Women	105	70	89	59	66
	Men	<u>50</u>	<u>41</u>	<u>49</u>	<u>36</u>	<u>38</u>
	<b>Total</b>	<b>155</b>	<b>111</b>	<b>138</b>	<b>95</b>	<b>104</b>

### Students with Disabilities

Undergraduate: 136 (6.0%)

Graduate: 34 (2.8%)

### Study Abroad Program – Locations and Majors of Students

Studio Art Centers International	Italy	BA Art Therapy
AIFS	Italy	BA Comp Soc Sci (Sociology)
Limerick	Ireland	BA History/Soc Sci (Sec Educ)
Studio Art Centers International	Italy	BFA Studio Art (Illustration)
Studio Art Centers International	Italy	BFA Studio Art (Painting)
King's College	England	BS Elementary Educ
Antioch University	Brazil	BS Environmental Science

7 students are currently studying abroad

## Fall 2010 International Student Enrollment

### By Country of Origin

#### Undergraduate:

Brazil	1
Bulgaria	1
China	1
Columbia	1
Indonesia	1
Ireland	1
Japan	4
Kenya	3
Korea	2
Pakistan	1
Peru	1
Saudi Arabia	8
South Korea	2
Taiwan	1
Tanzania	1
Trinidad & Tobago	2
<b>Total Undergraduate:</b>	<b>31 (1.4%)</b>

#### Graduate:

Barbados	1
China	1
Czech Republic	1
India	8
Indonesia	1
Kenya	3
Nigeria	1
Saudi Arabia	2
Turkey	1
<b>Total Graduate:</b>	<b>19 (1.6%)</b>

### By Major Course of Study

#### Undergraduate:

B (Undeclared, with interest in Education)  
 BA Art Therapy  
 BA Spanish  
 BBA Aviation Management (Prof Pilot/  
     Flight Operations)  
 BBA Business Information Technology  
 BBA Computer Information &  
     Telecommunication Systems  
 BBA Management  
 BM Music Performance  
 BS Biology/Secondary Education  
 BS Psychology (Clinical Practice)  
 BS Psychology (Industrial/Organizational)  
 Intensive English Program  
 Transfer Credit

#### Graduate:

MA Psychology (General Theoretical)  
 MBA Bus Adm (General Management)  
 MBA Bus Adm (MIS)  
 MFA Visual Arts (Graphic Design)  
 MHSA Health Services Administration  
 MHSA Health Services Admin (Long Term)  
 MS Gerontology  
 MS Nutrition  
 MS Sports Nutrition & Exercise Science  
 Ph.D. Human Development (Higher Education  
     Administration)  
 Ph.D. Human Development (Instructional  
     Leadership)

## Honors Program - Majors Represented

B (Pre-Physician Asst Studies)	BEDA Environmental Design-Architecture
B (Undeclared, Interest Unspecified)	BFA Design (Interior Architecture)
BA Art Therapy	BFA Graphic Design
BA Arts Administration	BFA Studio Art (Illustration)
BA Arts Administration (Art)	BS Biology
BA Arts Administration (Music)	BS Biotechnology
BA English	BS Communication Sciences and Disorders (Pre-Professional)
BA History	BS Early Childhood Education
BA History/Political Science	BS Early Childhood Special Education
BA History/Secondary Education	BS Elementary Education
BA Music/Secondary Education	BS Elementary Education/Special Education
BA Philosophy	BS Mathematics
BA Spanish/Secondary Education	BS Mathematics/Secondary Education
BA Theatre	BS Nutrition & Dietetics
BBA Business	BS Psychology
BBA International Business	BS Psychology (Clinical Practice)
BBA Management	BS Special Education
BBA Marketing	
BEDA Architecture	

## Honors Courses Offered in 2010-2011

### Fall 2010

ART 19 <sup>th</sup> Century Art	HIST Roots of the Modern World
BIOL General Microbiology	Global History of the 20 <sup>th</sup> Century
BUS Principles of Management	Contemporary History of Latin America
Accounting I	MATH Linear Algebra
Consumer Behavior	MUSC History of Music I
Personnel Management/HR	N D Sports Nutrition in Health Promotion
CHEM Principles of Chemistry	PHIL Introduction to Philosophy
CSD Audiology	Ethics
Communication Disorders in Adults	PSY General Psychology
EDUC Social Foundations	Developmental Psychology
ENGL Writing Skills	Contemporary Approaches to Learning
Introduction to World Literature	Theories of Personality
Children's Literature	R ST Modern Belief
Contemporary British Literature	Introduction to the Bible
American Short Fiction	S ED Curriculum Adaptations

### Spring 2011

ART Art in the Modern Era	MATH College Geometry
BUS Financial Management	PHIL Biomedical Ethics
CSD Articulation and Phonologic Disorders	Ethics
ENGL Introduction to World Literature	PSY Developmental Psychology
Women Writers	Psychology of Gender
HIST Global History of the Twentieth Century	R ST Foundations of Christian Morality
US History Since 1865	SPAN Contemporary Cultural Trends in Spanish-Speaking Films
Ancient and Medieval World History	

138 students are currently enrolled in honors courses

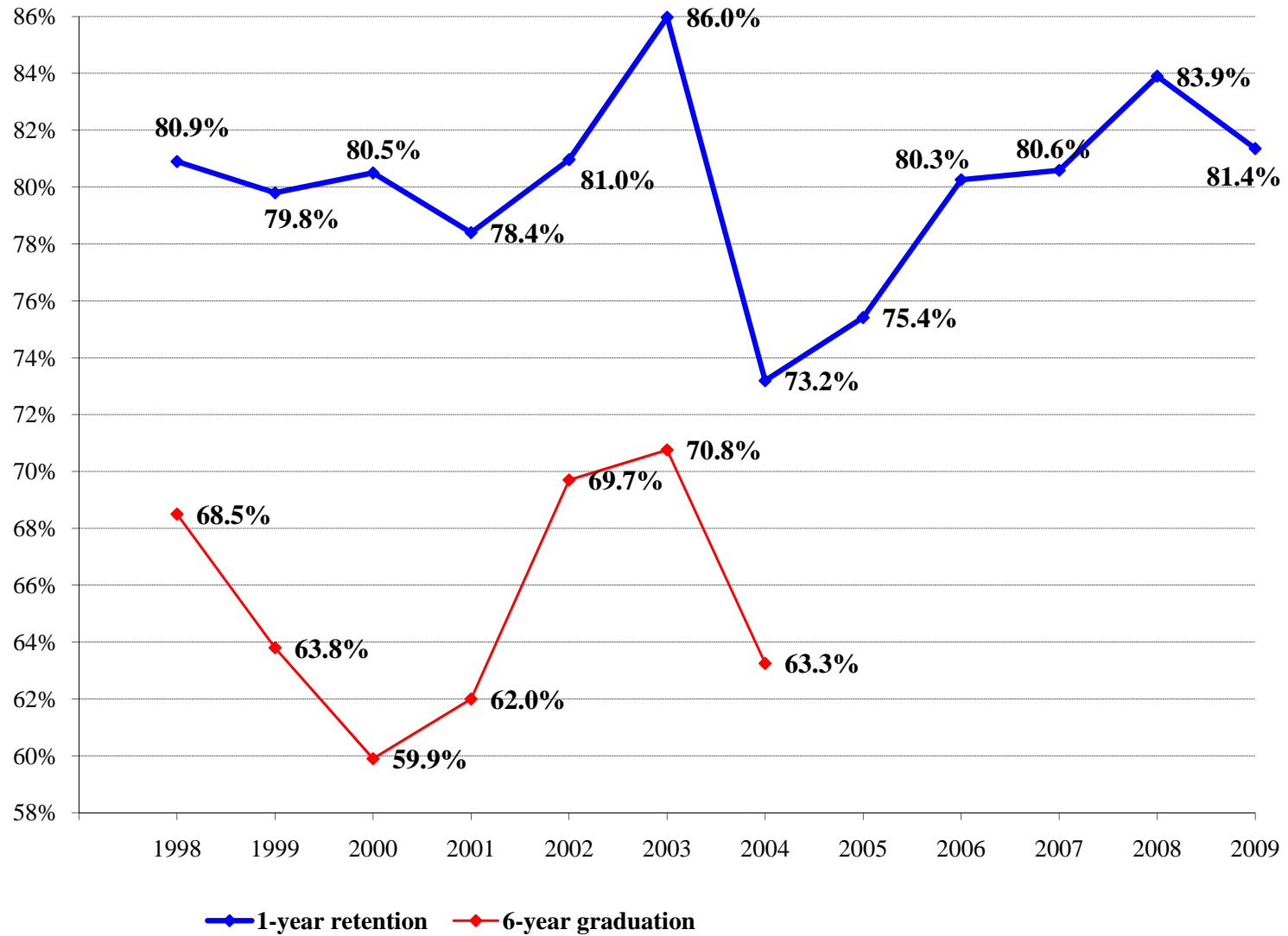
# Retention and Graduation Rates for First-Time Full-Time Freshmen by Year of Entry - Fall 1998 to Fall 2010

		Retention Rates								Graduation Rates			
Entering Fall Term		1st Fall	2nd Fall	3rd Fall	4th Fall	5th Fall	6th Fall	7th Fall	8th Fall	within 4 yrs	within 5 yrs	within 6 yrs	within 7 yrs
1998	N	241	195	176	176	69	18	4	1	102	150	165	169
	% enrollment	100%	80.9%	73.0%	73.0%	28.6%	7.5%	1.7%	0.4%	42.3%	62.2%	68.5%	70.1%
1999	N	282	225	194	184	70	12	7	2	118	171	180	183
	% enrollment	100%	79.8%	68.8%	65.2%	24.8%	4.3%	2.5%	0.7%	41.8%	60.6%	63.8%	64.9%
2000*	N	257	207	174	163	59	11	7	3	101	150	154	157
	% enrollment	100%	80.5%	67.7%	63.4%	23.0%	4.3%	2.7%	1.2%	39.3%	58.4%	59.9%	61.1%
2001	N	287	225	200	191	78	9	2	1	114	170	178	180
	% enrollment	100%	78.4%	69.7%	66.6%	27.2%	3.1%	0.7%	0.3%	39.7%	59.2%	62.0%	62.7%
2002	N	310	251	225	225	58	7	2	0	166	213	216	218
	% enrollment	100%	81.0%	72.6%	72.6%	18.7%	2.3%	0.6%	0.0%	53.5%	68.7%	69.7%	70.3%
2003*	N	277	239	210	203	45	6	0	0	152	188	196	199
	% enrollment	100%	86.3%	75.8%	73.3%	16.2%	2.2%	0.0%	0.0%	54.9%	67.9%	70.8%	71.8%
2004	N	332	243	221	216	61	11	2		149	200	210	
	% enrollment	100%	73.2%	66.6%	65.1%	18.4%	3.3%	0.6%		44.9%	60.2%	63.3%	
2005*	N	301	227	201	193	33	3			153	184		
	% enrollment	100%	75.4%	66.8%	64.1%	11.0%	1.0%			50.8%	61.1%		
2006*	N	383	307	285	270	67				197			
	% enrollment	100%	80.2%	74.4%	70.5%	17.5%				51.4%			
2007*	N	407	328	283	274					4			
	% enrollment	100%	80.6%	69.5%	67.3%					1.0%			
2008	N	422	354	306									
	% enrollment	100%	83.9%	72.5%									
2009*	N	413	336										
	% enrollment	100%	81.4%										
2010	N	452											
	% enrollment	100%											

NOTE: Average graduation rate computed by Student Right to Know (SRK) formula for 4-year programs is 66.3%

\*Student(s) removed from cohort

### Trends in 1-Year Retention and 6-year Graduation Rates of First-year Full-time Freshmen Fall 1998 to Fall 2009 Cohorts



## Athletics and Recreation

Marywood sponsors highly competitive intercollegiate teams in sixteen varsity sports. Marywood is a member of the National Collegiate Athletic Association (NCAA) Division III, the Colonial States Athletic Conference (CSAC), and the Eastern College Athletic Conference (ECAC). Marywood currently offers nine sports for females and seven for males:

<b>Female</b>	<b>Male</b>
Basketball	Basketball
Cross Country	Cross Country
Soccer	Soccer
Softball	Baseball
Tennis	Tennis
Lacrosse	Lacrosse
Field Hockey	Swimming/Diving
Volleyball	
Swimming/Diving	

A diverse selection of coed intramural and club sports is available. Sponsored club sports have included golf, swimming, dance team, cheerleading and running to name a few. Intramural sports offer a wide range of physical activities. Traditional programs such as basketball, volleyball, flag football, tennis and softball are offered in addition to innovative programs such as Frisbee golf and walleyball. Recreation programs include land and water aerobic classes (free for students), special competitive events, physical activity organizations, and fitness challenges.

The \$14 million dollar Robert J. Mellow Center for Athletics and Wellness opened in the fall of 2006. The Mellow Center offers state-of-the-art fitness, recreation, and athletic opportunities and includes a premier fitness center, a climbing wall, an elevated running track, a dance/aerobic studio, an arena to showcase Pacer sports, and high tech athletic training areas. A new Aquatics Center adjacent to the Mellow Center will open during the spring 2011 semester and feature eight lanes, one meter and three meter diving boards, spectator seating and team rooms. This represents the final phase of a \$25 million dollar expansion to Marywood's athletic and recreation facilities. Additional outdoor facilities include a new multipurpose turf field, tennis courts, sand volleyball court, basketball courts, and three grass fields.

- Student Athlete Academic Honor Roll Participation:
 

Fall 2009	65
Spring 2010	47
- Intramural Participation:
 

Fall 2009	219
Spring 2010	243
- Athletic Honors/Achievements (1992-2009):
  - Team PAC Championships: 24
  - Team Conference Runners-up – 20
  - Conference Coach of the Year – 32
  - Conference Female Scholar Athlete of the Year – 2001, 2006, 2008, 2009
  - Conference Male Scholar Athlete of the Year – 2005
  - All Conference Team Members
 

First Team – 208	Honorable Mention – 91
Second Team – 182	All Sportsmanship Team – 78
  - Men's Cross Country Conference Individual Champion – 1998, 2000
  - Women's Soccer Conference Player of the Year – 2002, 2008, 2009
  - Women's Soccer Rookie of the Year – 1999, 2009
  - Women's Cross Country Conference Individual Champion – 2004, 2006
  - Women's Field Hockey Conference Player of the Year – 2001
  - Volleyball Conference Player of the Year – 1992
  - Women's Tennis Conference Player of the Year - 1999
  - Women's Lacrosse Conference Rookie of the Year - 2009
  - Men's Tennis Conference Player of the Year – 2008
  - NCAA Post Graduate Scholarships – 2001, 2002, 2006

## II. PERSONNEL

### Employees by Ethnicity, EEO Category and Time Status

EEO-6 CATEGORY		06-07	07-08	08-09	09-10	10-11
<u>Executive/Administrative/Managerial</u>						
Full-Time	White	36	37	42	41	46
	Other	3	2	2	2	0
Part-Time	White	1	2	2	1	0
<u>Faculty (instructional only)</u>						
Full-Time	White	123.5	124	127	133.25	137.25
	Other	8	8	10	12	14
Part-Time	White	166	180	181	222	237
	Other	9	10	9	18	11
<u>Professional (includes librarians)</u>						
Full-Time	White	95	108	104	115	114.5
	Other	4	6	5	5	8
Part-Time	White	47	38	28	28	36
	Other	0	1	1	0	2
<u>Secretarial/Clerical</u>						
Full-Time	White	114	114	103	97	97
	Other	1	1	3	3	2
Part-Time	White	35	24	24	24	26
	Other	0	2	5	4	3
<u>Technical/Paraprofessional</u>						
Full-Time	White	23	23	24	21	18
	Other	0	0	0	1	1
Part-Time	White	14	14	7	5	5
	Other	0	3	3	0	0
<u>Skilled Craft</u>						
Full-Time	White	18	18	21	22	20
<u>Service/Maintenance</u>						
Full-Time	White	82	89	84	82	79
	Other	1	0	0	0	1
Part-Time	White	17	16	13	12	16
	Other	2	0	0	1	1
<b>Total</b>						
Full-Time	White	491.5	513	505	511.25	511.75
	Other	17	17	20	23	26
Part-Time	White	280	274	255	292	320
	Other	11	16	18	23	17



### Full-time Employees by Gender and Ethnicity

EEO-6 CATEGORY	06-07		07-08		08-09		09-10		10-11	
	M	F	M	F	M	F	M	F	M	F
<u>Executive/Administrative/Managerial</u>										
White	14	22	16	21	20	22	21	20	22	24
Black	1	0	0	0	0	0	0	0	0	0
Asian/Pacific Islander	0	1	0	0	0	0	0	0	0	0
Amer Ind/Alaskan Native	0	1	0	1	0	1	0	1	0	0
Other	0	0	1	0	1	0	1	0	0	0
<u>Faculty (instructional only)</u>										
White	52.3	71.3	54	70	48	68	57.5	75.75	57	80.25
Black	2	0	2	0	2	0	2	1	2	1
Hispanic	1	0	1	0	1	1	2	1	1	2
Asian/Pacific Islander	4	0	4	1	4	2	4	2	5	3
<u>Professional (includes librarians)</u>										
White	14	81	18	90	20	84	25	90	31	83.5
Black	0	1	1	1	0	1	0	1	1	1
Hispanic	1	0	1	0	0	0	0	0	0	1
Asian/Pacific Islander	1	1	1	2	1	3	1	3	1	4
<u>Secretarial/Clerical</u>										
White	7	107	8	106	5	99	5	92	4	93
Black	0	1	0	1	0	2	0	2	0	2
Hispanic	0	0	0	0	0	0	0	1	0	0
<u>Technical/Paraprofessional</u>										
White	13	10	13	10	12	11	11	10	10	8
Hispanic	0	0	0	0	0	0	0	1	0	1
<u>Skilled Craft</u>										
White	18	0	18	0	21	0	22	0	20	0
<u>Service/Maintenance</u>										
White	45	37	48	41	44	40	43	39	38	41
Black	1	0	0	0	0	0	0	0	1	0
<b>Total</b>										
White	163.3	328.3	175	338	170	324	184.5	326.75	182	329.75
Black	4	2	3	2	2	3	2	4	4	4
Hispanic	2	0	2	0	1	1	2	3	1	4
Asian/Pacific Islander	5	3	5	3	5	5	5	5	6	7
Amer Ind/Alaskan Native	0	1	0	1	0	1	0	1	0	0
Other	0	0	1	0	1	0	1	0	0	0
	174.3	333.3	186	344	175	334	194.5	339.75	193	344.75

### Number of Full-time and Pro-rata Faculty by College

	<u>2006</u>	<u>2007</u>	<u>2008</u>	<u>2009</u>	<u>2010</u>
<b>Reap College of Education and Human Development</b>					
Full-time	27	26	24	29	29
Pro-rata	4	3	2	2	2
FTE	29.25	27.5	25	30	30
<b>Insalaco College of Creative and Performing Arts</b>					
Full-time	32	33	33	24	25
Pro-rata	11	13	14	8	5
FTE	37.5	39.5	40	28	27.5
<b>College of Health and Human Services</b>					
Full-time	30	33	34	33	38
Pro-rata	5	3	4	4	5
FTE	32.5	34.5	36	35	40.5
<b>College of Liberal Arts and Sciences</b>					
Full-time	30	33	33	45	46
Pro-rata	5	3	4	6	6
FTE	32.5	34.5	35	48	49
<b>School of Architecture</b>					
Full-time				3	5
Pro-rata				0	0
FTE				3	5
<b>Librarians</b>					
Full-time	8	8	8	8	7
Pro-rata	0	0	0	0	1
FTE	8	8	8	8	7.5
<b>TOTAL</b>					
<b>Full-time</b>	<b>127</b>	<b>133</b>	<b>132</b>	<b>142</b>	<b>150</b>
<b>Pro-rata</b>	<b>25</b>	<b>22</b>	<b>24</b>	<b>20</b>	<b>19</b>
<b>FTE</b>	<b>139.8</b>	<b>144</b>	<b>144</b>	<b>152</b>	<b>159.5</b>

### Tenure Status Among Full-time Faculty

	<u>2006</u>		<u>2007</u>		<u>2008</u>		<u>2009</u>		<u>2010</u>	
	<u>N</u>	<u>%</u>	<u>N</u>	<u>%</u>	<u>N</u>	<u>%</u>	<u>N</u>	<u>%</u>	<u>N</u>	<u>%</u>
Professor	33	100.0	29	100.0	25	100.0	25	100.0	22	100.0
Assoc Professor	30	73.2	35	81.4	29	76.3	31	73.8	28	68.3
Asst Professor	7	14.3	9	16.7	8	14.3	5	15.6	6	9.1
Instructor	0	0.0	0	0.0	0	0.0	0	0.0	0	0.0
<b>Total University</b>	<b>70</b>	<b>55.1</b>	<b>73</b>	<b>54.9</b>	<b>62</b>	<b>50.0</b>	<b>61</b>	<b>43.7</b>	<b>56</b>	<b>37.3</b>

### Number of Full-time Faculty by Rank and Gender

	<u>2006</u>	<u>2007</u>	<u>2008</u>	<u>2009</u>	<u>2010</u>
Professor					
Male	18	17	14	14	12
Female	15	12	11	11	10
<b>Total</b>	<b>33</b>	<b>29</b>	<b>25</b>	<b>25</b>	<b>22 (14.7%)</b>
Associate Prof.					
Male	16	16	12	16	17
Female	25	27	26	26	23
<b>Total</b>	<b>41</b>	<b>43</b>	<b>38</b>	<b>42</b>	<b>40 (26.7%)</b>
Assistant Prof.					
Male	25	27	30	31	34
Female	24	27	26	28	31
<b>Total</b>	<b>49</b>	<b>54</b>	<b>56</b>	<b>59</b>	<b>65 (43.3%)</b>
Instructor					
Male	2	2	1	2	2
Female	2	5	12	10	12
<b>Total</b>	<b>4</b>	<b>7</b>	<b>13</b>	<b>12</b>	<b>14 (9.3%)</b>
Clinical Instructor					
Male				0	0
Female				4	9
<b>Total</b>				<b>4</b>	<b>9 (6.0%)</b>
<b>Total Full-time</b>	<b>127</b>	<b>133</b>	<b>132</b>	<b>142</b>	<b>150</b>

### Number of Full-time Faculty with Terminal Degrees

	<u>2006</u>		<u>2007</u>		<u>2008</u>		<u>2009</u>		<u>2010</u>	
	<u>N</u>	<u>%</u>	<u>N</u>	<u>%</u>	<u>N</u>	<u>%</u>	<u>N</u>	<u>%</u>	<u>N</u>	<u>%</u>
Doctorate	91	71.7	96	72.2	91	68.9	99	69.7	96	64.0
MSLS/MLIS	8	6.3	7	5.3	7	5.3	8	5.6	7	4.7
MFA/MPA	10	7.9	11	8.3	12	9.1	12	8.5	15	10.0
JD/MD	0	0.0	0	0.0	0	0.0	2	1.4	1	0.7
<b>Total University</b>	<b>109</b>	<b>85.8</b>	<b>114</b>	<b>85.7</b>	<b>110</b>	<b>83.3</b>	<b>121</b>	<b>85.2</b>	<b>119</b>	<b>79.3</b>

### III. FINANCES

#### Unrestricted Operating Revenues

	<u>FY 07-08</u>	<u>FY 08-09</u>	<u>FY 09-10</u>
Tuition and fees:			
Tuition:			
Undergraduate School - On Campus	\$42,891,563	\$48,310,110	\$52,402,219
Undergraduate - OCDP	696,187	109,110	93,678
Graduate School of Arts & Sciences	10,931,339	11,118,634	10,743,447
Graduate School of Social Work	4,601,839	4,530,436	4,607,054
Total Tuition	<u>59,120,928</u>	<u>64,068,290</u>	<u>67,846,398</u>
Less Scholarship Allowances	<u>-21,636,948</u>	<u>-24,324,749</u>	<u>-27,011,038</u>
Net Tuition	<u>\$37,483,980</u>	<u>\$39,743,541</u>	<u>\$40,835,360</u>
Fees:			
Registration and Application	205,340	132,465	88,705
General	1,948,320	2,154,240	2,316,560
Music Lessons	162,936	166,641	167,383
Student Teaching	6,900	4,200	3,300
Graduation	147,225	178,000	186,750
Orientation	133,271	131,927	145,027
Student Activities Fees	415,569	438,130	454,206
Non-credit Offerings	640,871	402,679	325,148
Miscellaneous	629,734	770,942	849,072
Total Fees	<u>\$4,290,166</u>	<u>\$4,379,224</u>	<u>\$4,536,151</u>
Total Tuition and Fees (Net)	<u>\$41,774,146</u>	<u>\$44,122,765</u>	<u>\$45,371,511</u>
Federal Grants and Contracts	\$1,007,485	\$1,048,467	1,256,494
State Grants and Contracts	1,445,063	1,811,864	1,078,208
Private Gifts and Grants	455,284	1,081,198	859,611
Income on Long-Term Investments	178,312	387,889	6,240
Other Investment Income	1,013,016	528,377	439,472
Net Unrealized and Realized Gains on Long-Term Investments	4,476,040	-166,768	191,408
Sales and Services of Educational Activities	325,718	311,288	299,736
Other Sources	484,319	615,425	693,870
	<u>\$9,385,237</u>	<u>\$5,617,740</u>	<u>\$4,825,039</u>
Sales and Services of Auxiliary Enterprises:			
Food Service	\$3,810,247	\$4,364,026	\$4,689,553
Resident Halls	5,514,483	6,219,675	6,690,732
Bookstore	1,393,108	1,432,758	1,324,237
Fricchione Day Care Center	481,615	504,831	524,910
Total Sales and Services of Auxiliary Enterprises	<u>\$11,199,453</u>	<u>\$12,521,290</u>	<u>\$13,229,432</u>
Total Net Assets Released From Restrictions	<u>4,327,956</u>	<u>2,818,568</u>	<u>2,862,225</u>
Total Current Revenues	<u><u>\$66,686,792</u></u>	<u><u>\$65,080,363</u></u>	<u><u>\$66,288,207</u></u>

### Percent Distribution of Unrestricted Operating Revenues

	FY 07-08 % of Total	FY 08-09 % of Total	FY 09-10 % of Total
Tuition and fees:			
Tuition:			
Undergraduate School - On Campus	64.3	74.2	79.1
Undergraduate - OCDP	1.0	0.2	0.1
Graduate School of Arts & Sciences	16.4	17.1	16.2
Graduate School of Social Work	6.9	7.0	7.0
Total Tuition	88.7	98.4	102.4
Less Scholarship Allowances	-32.4	-37.4	-40.7
Net Tuition	56.2	61.1	61.6
Fees:			
Registration and application	0.3	0.2	0.1
General	2.9	3.3	3.5
Music lessons	0.2	0.3	0.3
Student teaching	0.0	0.0	0.0
Graduation	0.2	0.3	0.3
Orientation	0.2	0.2	0.2
Student Activities Fees	0.6	0.7	0.7
Non-credit offerings	1.0	0.6	0.5
Miscellaneous	0.9	1.2	1.3
Total Fees	6.4	6.7	6.8
Total Tuition and Fees (Net)	62.6	67.8	68.4
Federal Grants and Contracts	1.5	1.6	1.9
State Grants and Contracts	2.2	2.8	1.6
Private Gifts and Grants	0.7	1.7	1.3
Income on Long-Term Investments	0.3	0.6	0.0
Other Investment Income	1.5	0.8	0.7
Net Unrealized and Realized Gains on Long-Term Investments	6.7	-0.3	0.3
Sales and Services of Educational Activities	0.5	0.5	0.5
Other Sources	0.7	0.9	1.0
	14.1	8.6	7.3
Sales and Services of Auxiliary Enterprises:			
Food service	5.7	6.7	7.1
Resident halls	8.3	9.6	10.1
Bookstore	2.1	2.2	2.0
Fricchione Day Care Center	0.7	0.8	0.8
Total Sales and Services of Auxiliary Enterprises	16.8	19.2	20.0
Total Net Assets Released From Restrictions	6.5	4.3	4.3
Total Current Revenues	100.0	100.0	100.0

### Unrestricted Operating Expenditures

	FY 07-08	FY 08-09	FY 09-10
Educational and General:			
Instruction	\$19,713,469	\$21,219,701	\$22,764,241
Research	474,690	777,979	347,841
Academic Support	6,710,050	7,506,077	7,615,282
Student Services	9,365,455	9,715,367	9,668,228
Institutional Support	11,258,506	11,721,389	12,044,173
Student Aid	325,379	348,687	325,467
Educational and General Expenditures	\$47,847,549	\$51,289,200	\$52,765,232
Auxiliary Enterprises	9,074,675	10,024,270	10,167,061
Total Expenditures	\$56,922,224	\$61,313,470	\$62,932,293

### Percent Distribution of Unrestricted Operating Expenditures

	FY 07-08 % of Total	FY 08-09 % of Total	FY 09-10 % of Total
Educational and General:			
Instruction	34.6	34.6	36.2
Research	0.8	1.3	0.6
Academic Support	11.8	12.2	12.1
Student Services	16.5	15.8	15.4
Institutional Support	19.8	19.1	19.1
Student Aid	0.6	0.6	0.5
Educational and General Expenditures	84.1	83.7	83.8
Auxiliary Enterprises	15.9	16.3	16.2
Total Expenditures	100.0	100.0	100.0

**Externally Sponsored Research  
as a Percentage of  
Unrestricted Operating Expenditures**

	<u>FY 07-08</u>	<u>FY 08-09</u>	<u>FY 09-10</u>
Total Unrestricted Operating Expenditures	\$56,922,224	\$61,313,470	62,932,293
Externally Sponsored Research Expenditures	474,690	777,979	347,841
Research Support as Percent of Total	0.83%	1.27%	0.55%

**Endowment, Quasi-Endowment and Other Long-Term Investments**

	<u>2007-08</u>	<u>2008-09</u>	<u>2009-10</u>
Endowment and Similar Funds:			
Quasi-Endowment, income designated for Graduate School of Arts and Sciences	\$465,451	\$465,451	\$465,451
Quasi-Endowment, income designated for scholarship aid	465,966	491,066	568,162
Quasi-Endowment, income not designated	23,747,337	21,378,768	24,213,994
Total Quasi-Endowment	24,678,754	22,335,285	25,247,607
Life Income Trust	27,027	26,980	28,490
Endowment	14,371,003	15,087,174	16,237,997
Total Endowment and Similar Funds	39,076,784	37,449,439	41,514,094
Other Long-Term Investments:			
Beneficial Interest in Perpetual Trusts	1,007,351	818,898	878,259
For matching funds under Federal Student Loan Program	263,261	267,455	267,409
Other	899,219	639,614	750,774
Total Other Long-Term Investments	2,169,831	1,725,967	1,896,442
Total Long-Term Investments	\$41,246,615	\$39,175,406	\$43,410,536

## Tuition, Fees, Room and Board Charges

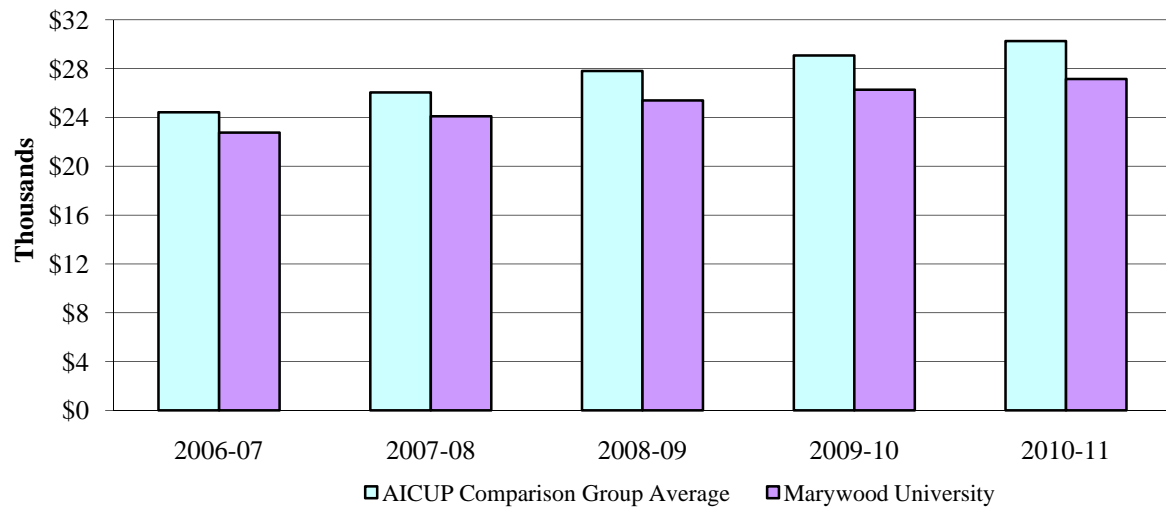
	<u>FY 06-07</u>	<u>FY 07-08</u>	<u>FY 08-09</u>	<u>FY 09-10</u>	<u>FY 10-11</u>
<b><u>Tuition Rates Per Credit</u></b>					
<i>Undergraduate</i>	\$600	\$550	\$550	\$575	\$590
<i>Distance Learning</i>	395	395	450	460	470
<i>Masters Level</i>	672	695	695	715	735
<i>Master of Fine Arts</i>	690	695	695	715	735
<i>Master of Social Work</i>	690	695	695	715	735
<i>Master of Public Administration</i>	695	695	695	715	735
<i>Master of Social Work (off-campus)</i>	695	695	695	715	735
<i>Master of Social Work (Bloomsburg Program)</i>		560	560	575	590
<i>Doctoral Level</i>	716	750	785	810	830
<i>Ph.D. (Hershey)</i>	745	780	815	840	860
<i>Keystone Professional Studies</i>		560			
<b><u>General Fee Per Year</u></b>					
<i>Full-Time</i>	\$830	\$850	\$890	\$920	\$950
<i>Part-Time</i>	280	300	340	370	400
<b><u>Student Activities Fee Per Year</u></b>					
<i>UG - Full-Time</i>	\$90	\$200	\$200	\$200	\$200
<i>UG - Part-Time</i>	50	100	100	100	100
<i>GR – Full- &amp; Part-Time</i>	-	40	40	40	40
<b><u>Registration Fee Per Year</u></b>	\$100	\$100	\$100	\$100	\$100
<b><u>Room &amp; Meals Per Year</u></b>					
<i>Double Room and 19 Meals/Week</i>	\$9,690	\$10,410	\$11,108	\$11,498	\$12,172
<i>Double Room and 185 Block Plan</i>	9,690	10,410	11,108	11,498	11,932
<i>Double Room and 12 Meals/Week</i>	9,100	9,780	10,458	10,826	12,172
<i>Double Room and 150 Block Plan</i>	9,100	9,780	10,458	10,826	11,238
<i>Single Room Fee (additional charge)</i>	850	850	1,255	1,414	1,552
<b><u>Other Major Fees</u></b>					
<i>New Student Matriculation Fee</i>	\$200	\$200	\$200	\$225	\$225
<i>Graduation Fee</i>	200	200	225	225	225
<i>Music Lessons (per credit charge in addition to tuition)</i>	395	395	395	395	395
<b><u>Undergraduate Cost of Attendance</u></b>					
<i>Tuition for Full-Time Students</i>	\$21,840	\$23,040	\$24,300	\$25,150	\$26,000
<i>Room &amp; Meals (19 meals)</i>	9,690	10,410	11,108	11,498	12,172
<i>General Fee</i>	830	850	890	920	950
<i>Student Activities Fee</i>	90	200	200	200	200
<b>Total Cost Per Year</b>	<b>\$32,450</b>	<b>\$34,500</b>	<b>\$36,498</b>	<b>\$37,768</b>	<b>\$39,322</b>



**Total Cost for Tuition & Required Fees and Room and Board  
Marywood University and AICUP Peer Institutions**

	2008-09 \$	2009-10 \$	2010-11 \$	most recent increase %
<u>Tuition and Fees</u>				
<b>Marywood University</b>	<b>25,390</b>	<b>26,270</b>	<b>27,150</b>	<b>3.3%</b>
Arcadia University	29,700	31,260	32,720	4.7%
Gannon University	22,662	23,574	24,582	4.3%
Immaculata University	24,575	26,540	27,870	5.0%
King's College	24,680	25,644	26,644	3.9%
La Roche College	20,330	21,638	22,476	3.9%
La Salle University	31,200	32,700	33,700	3.1%
Misericordia University	23,150	24,050	24,990	3.9%
St. Francis University	24,840	25,554	26,534	3.8%
St. Joseph's University	32,860	34,090	35,230	3.3%
Susquehanna University	31,080	32,450	34,070	5.0%
University of Scranton	31,576	33,124	34,536	4.3%
Villanova University	37,030	38,563	39,665	2.9%
Widener University	30,450	31,840	33,270	4.5%
Wilkes University	25,170	26,010	27,178	4.5%
<u>Room &amp; Board</u>				
<b>Marywood University</b>	<b>11,108</b>	<b>11,498</b>	<b>11,932</b>	<b>3.8%</b>
Arcadia University	10,280	10,680	11,150	4.4%
Gannon University	8,710	9,330	9,720	4.2%
Immaculata University	10,400	10,920	11,460	4.9%
King's College	9,370	9,838	10,068	2.3%
La Roche College	8,340	8,756	8,916	1.8%
La Salle University	10,690	11,150	11,540	3.5%
Misericordia University	9,650	10,050	10,410	3.6%
St. Francis University	8,422	8,718	9,066	4.0%
St. Joseph's University	11,180	11,575	11,925	3.0%
Susquehanna University	8,400	8,800	9,230	4.9%
University of Scranton	10,990	11,440	11,862	3.7%
Villanova University	10,087	10,340	10,640	2.9%
Widener University	10,840	11,270	11,720	4.0%
Wilkes University	10,780	11,100	11,470	3.3%

### Tuition and Fees: AICUP Comparison Group Average v. Marywood University



### Student Financial Aid

<b>Funding Source</b>	<b>FY 05-06</b>	<b>FY 06-07</b>	<b>FY 07-08</b>	<b>FY 08-09</b>	<b>FY 09-10</b>
<b>Institutional Aid</b>					
Marywood University	\$16,359,652	\$17,956,688	\$20,937,917	\$23,631,961	\$26,318,023
Endowments	88,301	47,126	44,183	47,730	50,380
<b>Institutional Aid</b>	<b>\$16,447,953</b>	<b>\$18,003,814</b>	<b>\$20,982,100</b>	<b>\$23,679,691</b>	<b>\$26,368,403</b>
<b>Federal, State, and Private Aid</b>					
Federal	1,840,984	2,093,412	2,433,434	2,654,429	3,736,795
State	2,510,888	2,915,731	2,965,606	2,534,390	2,525,943
Private	102,690	182,989	196,412	192,645	129,137
<b>Federal, State and Private Aid</b>	<b>\$4,454,562</b>	<b>\$5,192,132</b>	<b>\$5,595,452</b>	<b>\$5,381,464</b>	<b>\$6,391,875</b>
<b>Grand Total</b>	<b>\$20,902,515</b>	<b>\$23,195,946</b>	<b>\$26,577,552</b>	<b>\$29,061,155</b>	<b>\$32,760,278</b>

For comparability, Pell and PHEAA grants (listed below) are included in the above federal and state sources, respectively. These amounts are excluded from the audited financial statements.

Pell Grants	\$1,440,709	\$1,512,921	\$1,809,117	\$1,959,345	\$2,995,400
PHEAA Grants	\$2,379,524	\$2,838,451	\$2,806,108	\$2,428,375	\$2,806,468

### Total Gifts and Grants (Fiscal Gifts)

<u>Source</u>	<u>FY '06</u> <u>Amount</u>	<u>FY '07</u> <u>Amount</u>	<u>FY '08</u> <u>Amount</u>	<u>FY '09</u> <u>Amount</u>	<u>FY '10</u> <u>Amount</u>	<u>Five Year</u> <u>Amount</u>
Alumni	\$2,194,449	\$1,460,944	\$1,723,787	\$881,217	\$692,472	\$6,952,869
Foundations/Corporations	795,688	1,961,994	1,742,628	1,846,856	1,476,302	7,823,468
Friends	1,168,070	2,425,930	1,606,027	809,070	1,072,629	7,081,726
Parents	19,842	33,729	94,554	43,148	41,844	233,117
Sub-total	\$4,178,049	\$5,882,597	\$5,166,996	\$3,580,291	\$3,283,247	\$22,091,180
Sisters, Servants of the Immaculate Heart of Mary						
I.H.M. Scholarship Gift	300,000	250,000	255,000	250,000	225,000	1,280,000
Competitive Government Grants and Contracts	938,858	557,827	2,818,439	1,378,434	648,319	6,341,887
Sub-total	\$1,238,858	\$807,827	\$3,073,439	\$1,628,434	\$873,319	\$7,621,877
<b>Grand Total</b>	<b>\$5,416,907</b>	<b>\$6,690,424</b>	<b>\$8,240,434</b>	<b>\$5,208,725</b>	<b>\$4,156,566</b>	<b>\$29,713,056</b>

### Corporate/Foundation Relations Office Activity

#### Externally Awarded Grants

<u>Area</u>	<u>FY 2008</u>		<u>FY 2009</u>		<u>FY 2010</u>	
	<u>N</u>	<u>Amount</u>	<u>N</u>	<u>Amount</u>	<u>N</u>	<u>Amount</u>
Insalaco College of Creative Arts and Management	5	\$26,906	3	\$22,892	3	\$9,782
Reap College of Education and Human Development	1	\$19,525	0	0	2	\$298,734
College of Health and Human Services	6	\$236,435	3	\$58,847	5	\$103,824
College of Liberal Arts and Sciences	2	\$282,525	0	0	2	\$9,500
Student Life	1	\$11,500	1	\$11,500	1	\$11,350
Institutional	7	\$238,660	7	\$2,575,439	6	\$586,400
<b>TOTAL</b>	<b>22</b>	<b>\$815,551</b>	<b>14</b>	<b>\$2,688,439</b>	<b>19</b>	<b>\$1,019,590</b>

### Alumni Giving Fiscal Years 2006 – 2010

Fiscal Year	Number of Donors	% Participation	Total Giving	Average Gift
2006	3,219	20.1	\$2,194,449	\$681.72
2007	3,821	16.5	1,460,944	382.35
2008	3,967	16.7	1,723,787	434.53
2009	4,134	16.2	881,217	213.16
2010	3,913	15.1	692,472	176.97

### Office of Research and Community Collaboration

#### Academic Affairs

#### Research and Program Grants and Contracts (Public and Private Funds)

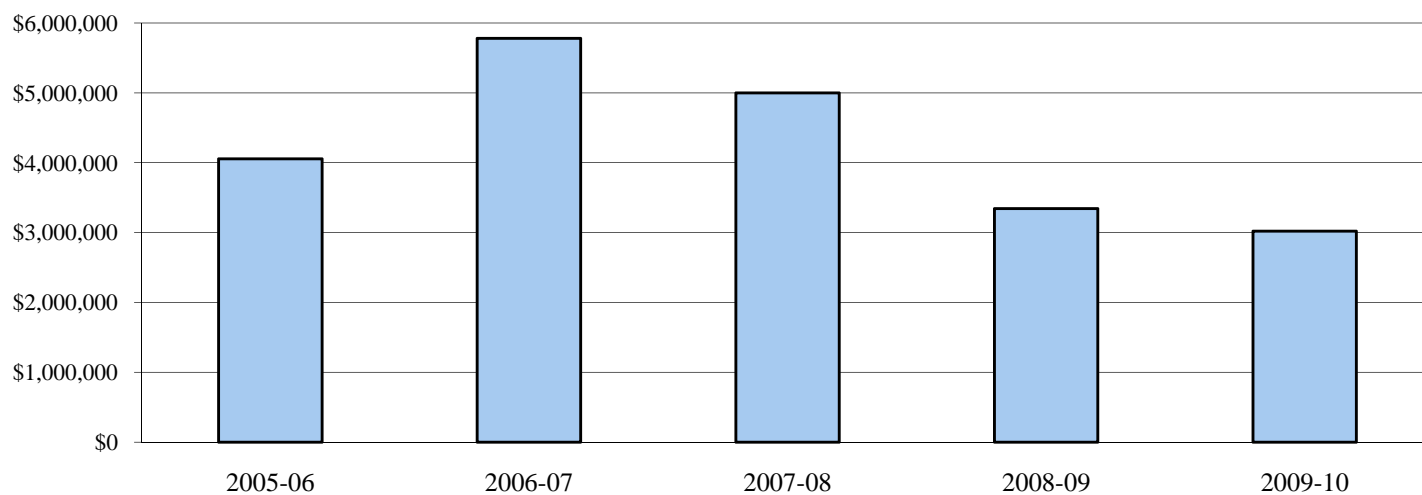
FY 2004-05	\$1,177,328	FY 2006-07	\$1,191,032	FY 2008-09	\$2,218,130
FY 2005-06	\$1,064,825	FY 2007-08	\$1,920,238	FY 2009-10	\$1,333,016

## Gift\* Levels by Campaign Year Giving by Gift Size

Current Operations	2006-07		2007-08		2008-09		2009-10	
	N	\$	N	\$	N	\$	N	\$
\$5,000	39	1,654,376	36	1,633,463	29	1,468,702	38	1,148,621
\$2,500-4,999	31	89,333	32	94,493	31	88,078	34	89,853
\$1,000-2,499	130	156,295	116	131,519	104	133,281	124	141,967
\$250-999	248	89,467	336	119,587	352	103,234	377	143,191
\$100-249	944	107,295	1076	138,719	1,137	134,433	1015	120,969
\$1-99	2613	83,414	2354	86,177	2,588	79,651	2,371	81,190
<b>Totals</b>	<b>4,005</b>	<b>2,180,180</b>	<b>3,950</b>	<b>2,203,958</b>	<b>4,241</b>	<b>2,007,378</b>	<b>3,959</b>	<b>1,725,791</b>
<b>Capital and Endowment</b>								
\$5,000	67	3,738,800	63	2,976,277	44	1,642,891	48	1,595,727
\$2,500-4,999	15	45,323	23	65,245	11	36,280	21	54,754
\$1,000-2,499	72	96,016	74	95,726	59	77,619	68	85,529
\$250-999	102	45,557	120	48,985	80	40,471	71	26,901
\$100-249	164	20,278	199	25,051	150	18,645	136	16,790
\$1-99	183	6,441	176	6,753	182	7,007	79	2,755
<b>Totals</b>	<b>603</b>	<b>3,952,415</b>	<b>655</b>	<b>3,218,037</b>	<b>526</b>	<b>1,822,913</b>	<b>423</b>	<b>1,782,456</b>
<b>Total Giving by Year</b>								
<b>Current Operations &amp; Capital and Endowment</b>	<b>4,608</b>	<b>6,132,595</b>	<b>4,605</b>	<b>5,421,955</b>	<b>4,767</b>	<b>3,830,291</b>	<b>4,382</b>	<b>3,508,247</b>
<b>Presidential Society</b>	<b>354</b>	<b>5,780,143</b>	<b>356</b>	<b>5,000,399</b>	<b>238</b>	<b>3,343,259</b>	<b>230</b>	<b>3,019,494</b>

\* Does not include Competitive Government Grants and Contracts

## Total Presidential Society Giving



## IV. FACILITIES

### Land and Building Inventory

**Land (In Acres):**

	<u>June 30, 2006</u>	<u>June 30, 2007</u>	<u>June 30, 2008</u>	<u>June 30, 2009</u>	<u>June 30, 2010</u>
Land in Scranton, PA	70.0	70.0	70.0	70.0	70.3
Land in Dunmore, PA	43.4	43.4	43.4	43.4	43.4
<b>Total</b>	<b>113.4</b>	<b>113.4</b>	<b>113.4</b>	<b>113.4</b>	<b>113.7</b>

**Buildings:**

<u>Building</u>	<u>Predominant Function</u>	<u>Usable Square Footage</u>
Adams Avenue Property (#2205)	President's Residence	3,190
Adams Avenue Property (#2305)	Administrative	2,924
Adams Avenue Property (#2349)	Student Life Residence	2,857
Bethany Hall and Garage	Student Residence	4,970
Center For Natural and Health Sciences	Academic	45,535
Chemical Room	Chemical Storage	320
Domiano Early Childhood Center	Special	2,810
Emmanuel Hall	Student Residence	8,359
Fricchione Day Care Center	Special	8,397
Health and Physical Education Center	Academic/Recreation	21,632
Immaculata Hall	Administration/Student Residence	31,994
Insalaco Center for Studio Arts	Academic	56,020
Keith J. O'Neill Center for Healthy Families	Academic/Special	24,828
Learning Resources Center	Library	66,182
Liberal Arts Center	Academic/Administrative	70,263
Loughran Hall	Student Residence/Administrative	109,247
Madonna Hall	Student Residence	51,674
Maria Hall	Administrative	5,020
McCarty Hall	Student Residence	4,921
McGowan Center for Graduate and Professional Studies	Academic	55,252
Perpetual Help Hall	Student Residence	3,574
Power Plant and Maintenance Building	Support	19,924
Printing and Mailing Center	Support	3,674
Regina Hall	Student Residence/Administrative	56,907
Richmont Street Property (#1210)	Student Residence/Administrative	4,269
Robert J. Mellow Center	Academic/Athletics/Recreation	62,727
Sette La Verghetta Center for Performing Arts	Academic	39,769
Shields Visual Arts Center	Academic	56,707
Student Center (Nazareth Hall)	Campus Life	52,197
Washington Avenue Property (#2400)	IHM Residence	3,183
Woodland Residences I	Student Residences	10,442
Woodland Residences II	Student Residences	26,190
Woodland Residences III	Student Residences	14,617
<b>Total Square Footage</b>		<b>930,565</b>
<b>Net Book Value of Buildings (historical cost less accumulated depreciation)</b>		<b>\$97,554,041</b>
<b>Cost of Replacement</b>		<b>\$183,736,600</b>

**Leased facilities:**

DeSales University - School of Social Work

## University Library

	<u>2007/08</u>	<u>2008/09</u>	<u>2009/10</u>
<b><u>Resources</u></b>			
<b><i>Print Collection</i></b>			
Books and Bound Periodicals	220,365	220,998	220,530
Books Added	2,543	2,502	2,367
Print Journal Titles	434	414	404
Distinct Journal Titles (Electronic and Print)	15,904	17,923	28,091
Microfiche	364,677	364,677	364,677
Reels of Microfilm	13,363	13,471	13,497
<b><i>Media Collection</i></b>			
Art Prints	339	339	337
Audiotapes	7,647	7,530	7,520
Compact Discs	4,421	5,296	7,191
Computer Software	21	21	21
DVDs	2,496	3,046	3,911
Records	5,240	5,228	5,227
Slides	22,584	22,584	22,584
Sound Slidesets	27	27	27
Study Prints	418	418	418
Videorecordings	6,769	6,694	6,614
<b><i>Electronic Resources</i></b>			
Internet Databases	56	63	53
Full-Text Databases	38	52	51
<b><u>Expenditures</u></b>			
Books and Periodicals	\$229,792	\$226,526	\$209,862
Electronic Resources	97,420	115,015	110,253
Bindings	6,244	6,486	6,636
Non-Print Media	20,439	22,850	20,022
Supplies	13,820	19,554	8,560
<b><i>Interlibrary Loan</i></b>			
Borrowed	1,391	3,163	4,302
Loaned	3,016	6,893	4,852
<b><i>Staff</i></b>			
Professionals	9.0	9.0	9.0
Clerical	14.8	13.9	12.7
Student Assistants	28	26	25
<b>Circulation – Total</b>	<b>14,802</b>	<b>26,953</b>	<b>29,752</b>
<b>Hours of Service/Week</b>	<b>83.0</b>	<b>84.5</b>	<b>86.5</b>
<b>Reference Transactions in a Typical Week</b>	<b>108</b>	<b>88</b>	<b>157</b>
<b>Gate Count in a Typical Week</b>	<b>1,812</b>	<b>2,419</b>	<b>3,668</b>
<b>No. of Presentations, Workshops, Etc.</b>	<b>137</b>	<b>134</b>	<b>138</b>
<b>No. of Students, Faculty Attending</b>	<b>2,056</b>	<b>2,073</b>	<b>2,089</b>

## **Office of Information Technology**

The Office of Information Technology (OIT) is responsible for providing technology support to the Marywood University campus. As the central organization of all IT resources on campus, it is made up of four departments: User Support Services, Application Programming Services, Network & Systems Administration Services, and Academic Computing Services.

### **User Support Services**

User Support Services provides Help Desk and Training support. The Help Desk is centralized and multi-campus-wide, and provides desktop and software support, problem solving, response to new and other OIT service requests, and with the OIT staff answers all service requests.

Training by expert User Support staff is given on Office products and specialized software.

User Support provides student lab assistants who take care of basic problems and maintain the computer labs located throughout campus that provide technology as needed for the completion of course requirements. Drop-in areas are dispersed in dorms and academic buildings, and are connected to the Internet with high speed fiber optics and wireless hubs throughout campus. See <http://www.marywood.edu/helpdesk/> for specifics on software, documentation, lab locations and hours as well as other aspects of OIT user support.

### **Application Programming Services**

Application Programming Services supports administrators and staff in management and student services, and gives ongoing technical and staff support for effective data and process operations. This includes programming for over 5,000 applications that manage the University's business functions, such as registration, paying tuition fees, and viewing course requirements on line.

### **Network and System Administration**

Marywood University is committed to providing high quality, usable technology for its students, faculty and staff, including access to the Internet and World Wide Web, and sharing institutional data, as appropriate, in a real-time, on-line environment. The Marywood data infrastructure began in 1987 and continues to grow with added fiber optic backbone, voice, data and video wiring, desktop and laptop computers, midrange computers, the campus-wide information system (CWIS), computer labs, networks operating under the client-server architecture, gateways to the Internet and World Wide Web, multi-media instruction and demonstration theaters.

The fiber optic backbone connects all major classroom, administrative buildings, and residence halls. Nineteen buildings are wired for voice, data and video with wireless capabilities widespread throughout the campus. Users regularly access the Internet through 220 MB of internet connectivity. Over six hundred student computers connect to our network in dorms.

### **Academic Computing**

This division advises and assists faculty in the use of information technology for the creation, organization, analysis, and presentation of scholarly, scientific, and curricular resources. In courses using the learning management system called Moodle, syllabi, course information, chat, assignment, and test capabilities are all on line. In helping to drive the technology evolution on

campus, Academic Computing trains faculty on the utilization of technology at hand and collaborates them to identify and find technical solutions to instructional needs.

### **Computer Labs**

Throughout locations in every major building, the Office of Information Technology maintains 11 computer labs (12 to 21 computers per lab) that are used as classes or drop-in areas when not reserved for class. Also available are seventeen smaller drop-in labs for use by any student, faculty, or staff member. A 24/7 computing facility is located in our largest dormitory, Loughran Hall. Most labs are Windows-based PCs with Macintosh computers in buildings housing graphic arts or education. All have a high-speed Internet connection and Microsoft Office as well as a number of specialized programs as needed by various departments.

### **Peer-to-Peer Policy Statement**

Marywood University prohibits Peer to Peer (P2P) network traffic from the campus network because of its widespread use in distributing illegal or copyrighted material. The Office of Information Technology reserves the right to remove any computer in question from the network entirely if it is found to be distributing or collecting illegal or copyrighted material, or using excessive amounts of network bandwidth to the detriment of other computers on the network.

### **Definitions**

On the Internet, P2P is a type of transient Internet network that allows a group of computer users with the same networking program to connect with each other and directly access files from one another's hard drives. The files can include music, videos, photos, games and other files.

These P2P programs include, but are not limited to, BitTorrent, Limewire, Gnutella, Vuze, Ares and Ants. Marywood University blocks the use of peer-to-peer applications on all network segments. The use of these applications can expose considerable vulnerabilities. P2P networks have been used to distribute viruses, malware and corrupted or mislabeled files, a threat that can severely impact university operations and online academic research. Malware exposure is a primary staging platform for identity and electronic financial theft.

Marywood University expects that all computers and networks on the campus will be used in a manner consistent with the Conditions of Computer Use Policy and compliant with applicable law. Marywood University is under no obligation to protect a user from a complaint or action arising from violation, or alleged violation, of the law. Users should understand that the fact that material is available for free on the Internet does not mean that accessing such material is authorized by third party rights-holders.

Marywood University prohibits the download and distribution of any copyrighted material, such as music, video, photos and software. Disproportionate bandwidth usage and copyright infringement are violations of the University's Conditions of Computer Use Policy.

**Some Legal Alternatives for Downloading:** AOL Music, ESPN360, Hulu Movies & TV, iTunes Movies, Music & TV, MTV Video, MySpace Music, Netflix Movies & TV, Pandora, VH1 Videos, Xbox Live Marketplace.



## V. ACCREDITATIONS

### Marywood University Accreditations/Approvals

#### Regional

Marywood University is accredited by the **Middle States Commission on Higher Education**,

3524 Market Street, Philadelphia, PA 19104

Phone: 267-284-5000

The Commission on Higher Education is the unit of the Middle States Association of Colleges and Schools that accredits degree-granting colleges and universities in the Middle States region, which includes Delaware, the District of Columbia, Maryland, New Jersey, New York, Pennsylvania, Puerto Rico, the U.S. Virgin Islands, and several locations abroad.

#### Professional

Business and Managerial Science Programs granting the B.B.A. Degrees at the Undergraduate Level and the M.B.A. and M.S. in Management Information System Degrees at the Graduate Level  
**Accreditation Council for Business Schools and Programs**,  
7007 College Boulevard, Suite 420, Overland Park, KS 66211  
Phone: 913-339-9356

The Masters Degree in Physician Assistant Studies  
**Accreditation Review Committee on Education for the Physician Assistant, Inc.**,  
12000 Findley Road, Suite 240, Duluth, GA 30097  
Phone: 770-476-1224

The Graduate Art Therapy Program of the Department of Art  
**American Art Therapy Association, Inc.**,  
5999 Stevenson Ave., Alexandria, VA 22304  
Phone: 888-290-0878 or 1-703-212-2238

The Didactic Program, Coordinated Program, and Internship and Distance Internship Programs in the Nutrition and Dietetics Department  
**Commission on Accreditation for Dietetics Education, American Dietetic Association**,  
120 South Riverside Plaza, Suite 2000, Chicago, IL 60606  
Phone: 312-899-4817 ext. 5400

The Undergraduate Music Therapy Program  
**American Music Therapy Association, Inc.**,  
8455 Colesville Road, Suite 1000, Silver Spring, MD 20910  
Phone: 1-301-589-3300

The Masters Program in Speech-Language Pathology  
**Council on Academic Accreditation, American Speech-Language-Hearing Association**,  
10801 Rockville Pike, Rockville, MD 20852  
Phone: 800-498-2071

The Athletic Training Program in the Health and Physical Education Department  
**Commission on Accreditation of Athletic Training Education**,  
2201 Double Creek Drive, Suite 5006, Round Rock, TX 78664  
Phone: 512-733-9700

Counseling Programs in Elementary Counseling, Secondary School Counseling and Mental Health Counseling  
**Council for Accreditation of Counseling and Related Educational Programs**,  
5999 Stevenson Avenue, Alexandria, VA 22304  
Phone: 703-823-9800 ext. 301

The Masters and Baccalaureate of Social Work degree programs in the School of Social Work  
**Council on Social Work Education**,  
1725 Duke Street, Suite 500, Alexandria, VA 22314  
Phone: 703-683-8080

Programs in Art and Design of the Department of Art  
**National Association of Schools of Art and Design**,  
11250 Roger Bacon Drive, Suite 21, Reston, VA 20190  
Phone: 703-437-0700

Programs in Music  
**National Association of Schools of Music**,  
11250 Roger Bacon Drive, Suite 21, Reston, VA 20190  
Phone: 703-437-0700

Programs for the preparation of elementary, secondary, K-12 and special education teachers and for the preparation of other school personnel including school psychologists, guidance counselors, principals, superintendents, librarians, reading specialists, speech and language pathologists, home school visitors, and supervisory personnel  
**National Council for Accreditation of Teacher Education**,  
2010 Massachusetts Ave NW, Suite 500,  
Washington, DC 20036  
Phone: 202-466-7496

The Graduate and Undergraduate Department of Nursing  
**National League for Nursing Accrediting Commission**,  
61 Broadway, 33<sup>rd</sup> Floor, New York, NY 10006  
Phone: 1-800-669-1656

The Doctor of Psychology (Psy.D.) program in Clinical Psychology is accredited as a doctoral program in clinical psychology by the **American Psychological Association (APA)**, Office of Program Consultation and Accreditation,  
750 First Street, NE, Washington, DC 20002-4242  
Phone: 202-336-5979

## VI. STRATEGIC PLAN GOALS AND OBJECTIVES

### Marywood University

#### STRATEGIC PLAN GOALS AND OBJECTIVES 2010 - 2015

**GOAL 1: Create both academic and physical infrastructure to provide a learning environment that enables students to succeed academically and professionally.**

**Objective A:** *Enhance the quality of the Marywood educational experience.*

**Objective B:** *Enhance and promote Marywood University's academic reputation.*

**Objective C:** *Continue to expand research opportunities for faculty and students.*

**Objective D:** *Improve physical environment for delivering instruction, conducting research, and accommodating alternative learning styles.*

**GOAL 2: Create a culturally diverse and global educational experience to educate students to live responsibly in a diverse and interdependent world.**

**Objective A:** *Increase the number of culturally diverse students, faculty, and staff.*

**Objective B:** *Enhance curriculum to reflect the current global perspective.*

**Objective C:** *Develop more sensitive and positive attitudes and behaviors toward cultural diversity by faculty, staff and students including attention to providing a welcoming and supportive campus.*

**Objective D:** *Increase opportunities for study abroad and other cultural exchange experiences for students and faculty.*

**GOAL 3: Align resources to achieve institutional goals, with a focus on environmental stewardship.**

**Objective A:** *Improve information services and access for students, faculty, staff, and external audiences.*

**Objective B:** *Improve financial position through revenue enhancement activity.*

**Objective C:** *Improve the quality and efficiency of infrastructure.*

**Objective D:** *Align human resource initiatives to institutional goals.*

**Objective E:** *Create a campus-wide initiative to implement Sustainable Design Practices in all building and campus maintenance and operations, building renovations, and new construction.*